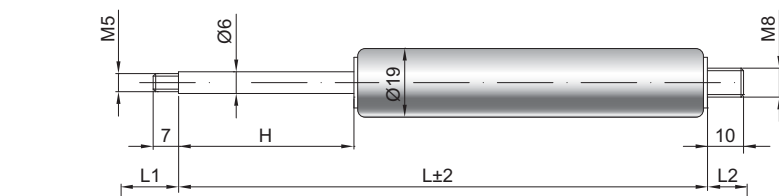


Ressort à gaz G06-19

Force de poussée F1	40 - 400 Newton
Progression	17 %
Tige	6 mm acier chromé
Corps	19 mm acier laqué noir
Embouts	Acier zingué

GZ 10

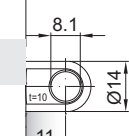
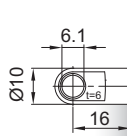
GZ 10



AU 16

AB 11

Uniquement côté corps



Details

Courses H (mm)

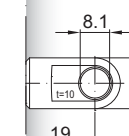
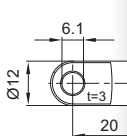
20, 30, 40, 50, 60, 70, 80, 100, 110,
120, 140, 150, 160, 170, 180, 190, 200,
220, 250, 300

Longueur standard GL

$L = 2 \times H + 55$
 $GL = L + L1 + L2$

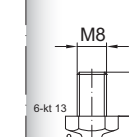
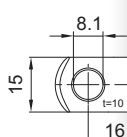
AS 20

AU 19



AR 16

WG 18



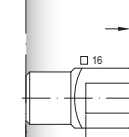
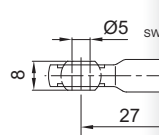
Options

- 2 - Valve latérale QVGZ
- 4 - Chambre d'huile
- 5 - Valve
- 6 - Tube de protection
- 7 - Piston flottant
- B3 - Système d'étanchéité
- NT - Basses températures
- HT - Hautes températures
- RK - Frottements accrus

AG 27

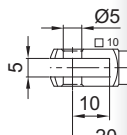
GA 32

Maxi 800 N



Existe en inox 303/304 et 316 (sur demande)

GA 20



WX 22

QV GZ

