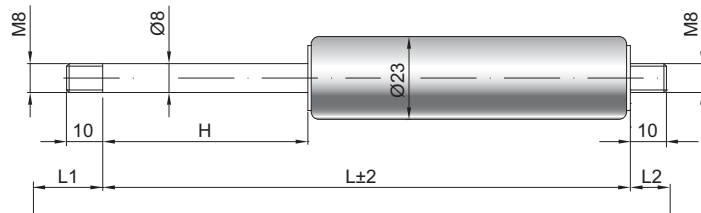


Ressort à gaz G08-23

Force de poussée F1 50 - 700 Newton
 Progression 18 %
 Tige 8 mm acier chromé
 Corps 23 mm acier laqué noir
 Embouts Acier zingué

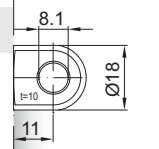
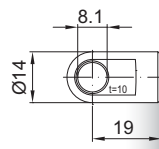
GZ 10

GZ 10



AU 19

AB 11



Details

Courses H (mm)

40, 50, 60, 70, 80, 100, 110, 120, 140, 150, 160, 180, 200, 220, 250, 300, 350, 400, 500

Longueur standard GL

$L = 2 \times H + 70$
 $GL = L + L1 + L2$

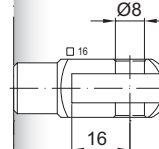
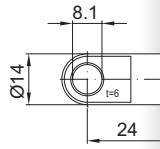
Options

- 1 - Racler de tige
- 2 - Valve latérale QVGZ
- 4 - Chambre d'huile
- 5 - Valve
- 6 - Tube de protection
- 7 - Piston flottant
- 8 - Béquille de verrouillage mécanique
- B3 - Système d'étanchéité
- NT - Basses températures
- HT - Hautes températures
- RK - Frottements accrus

Uniquement côté corps

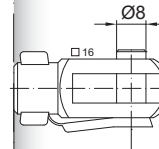
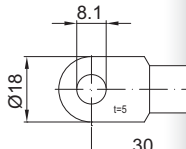
AS 24

GA 32



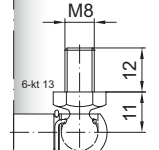
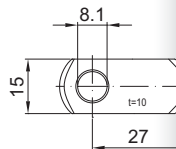
AS 30

GG 32



AR 27

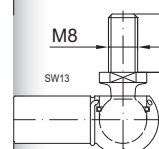
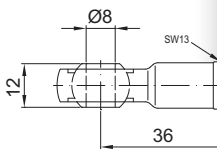
WG 18



Maxi 800 N

AG 36

WG 30



Existe en inox 303/304 et 316 (sur demande)

QV GZ

