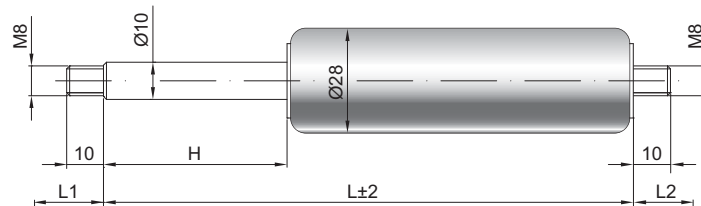


# Ressort à gaz G10-28

Force de poussée F1	100 - 1200 Newton
Progression	20 %
Tige	10 mm acier chromé
Corps	28 mm acier laqué noir
Embouts	Acier zingué

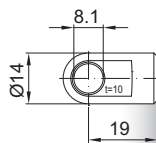
GZ 10



GZ 10

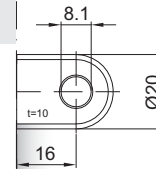
## Details

AU 19



### Courses H (mm)

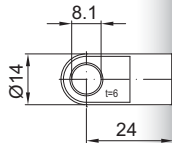
40, 50, 60, 80, 85, 100, 120, 140, 150, 160, 180, 200, 220, 250, 270, 300, 325, 350, 400, 450, 500, 600, 700



AB 16

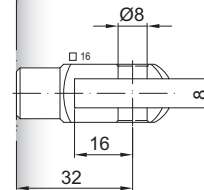
Uniquement côté corps

AS 24



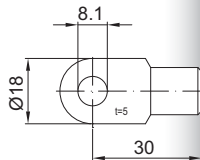
### Longueur standard GL

$L = 2 \times H + 70$   
 $GL = L + L1 + L2$



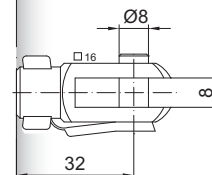
GA 32

AS 30



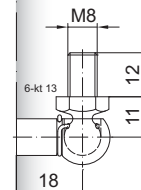
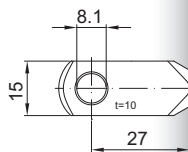
### Options

- 1 - Racleur de tige
- 2 - Valve latérale QVGZ
- 4 - Chambre d'huile
- 5 - Valve
- 6 - Tube de protection
- 7 - Piston flottant
- 8 - Béquille de verrouillage mécanique
- B3 - Système d'étanchéité
- NT - Basses températures
- HT - Hautes températures
- RK - Frottements accrus



GG 32

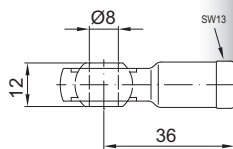
AR 27



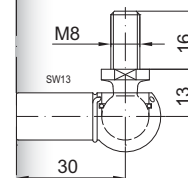
WG 18

Maxi 800 N

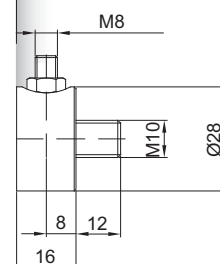
AG 36



Existe en inox 303/304 et 316



WG 30



QV GZ