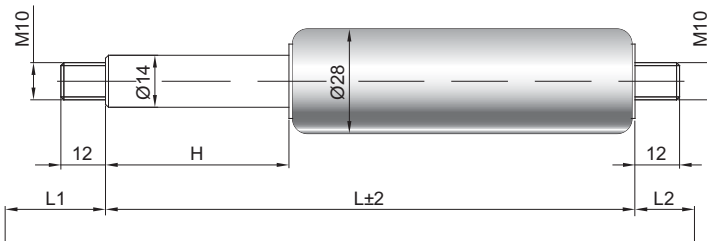


Ressort à gaz G14-28

Force de poussée F1	150 - 2500 Newton
Progression	40 %
Tige	14 mm acier chromé
Corps	28 mm acier laqué noir
Embouts	Acier zingué

GZ 12

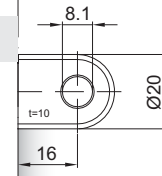
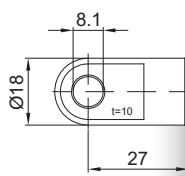
GZ 12



AU 27

AB 16

Uniquement côté corps



Details

Courses H (mm)

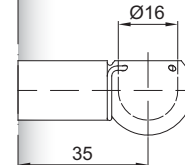
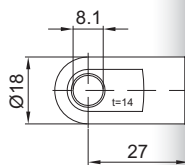
50, 60, 80, 100, 120, 150, 160, 180,
200, 210, 220, 250, 300, 350, 400, 450,
500, 550, 600, 650, 700

Longueur standard GL

$L = 2 \times H + 107$
 $GL = L + L1 + L2$

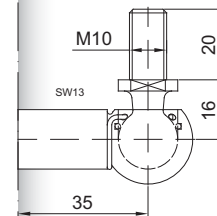
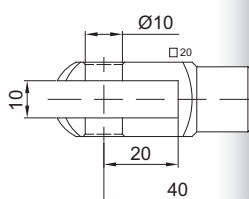
AS 27

PF 35



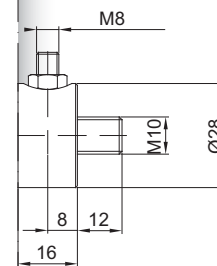
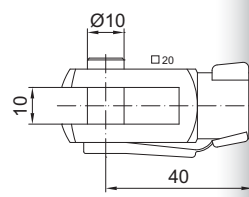
GA 40

WG 35

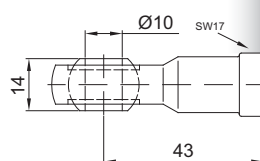


GG 40

QV GZ



AG 43



Options

- 1 - Racleur de tige
- 2 - Valve latérale QVGZ
- 4 - Chambre d'huile
- 5 - Valve
- 6 - Tube de protection
- 7 - Piston flottant
- 8 - Béquille de verrouillage mécanique
- B3 - Système d'étanchéité
- NT - Basses températures
- HT - Hautes températures
- RK - Frottements accrus

Existe en inox 303/304 et 316