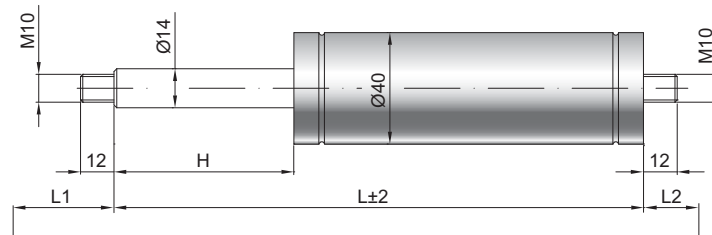


Ressort à gaz G14-40

Force de poussée F1 150 - 2500 Newton
 Progression 16 %
 Tige 14 mm acier chromé
 Corps 40 mm acier laqué noir
 Embouts Acier zingué

GZ 12

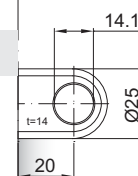
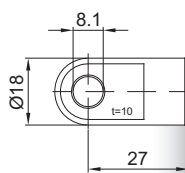
GZ 12



AU 27

AZ 20

Uniquement côté corps



Details

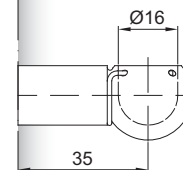
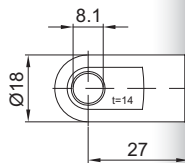
Courses H (mm)

50, 60, 80, 100, 120, 150, 160, 180, 200, 210, 220, 250, 300, 350, 400, 450, 500, 550, 600, 650, 700

Longueur standard GL

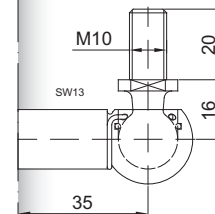
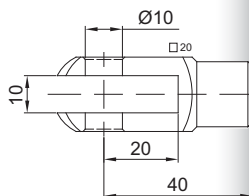
$L = 2 \times H + 100$
 $GL = L + L1 + L2$

AS 27



PF 35

GA 40

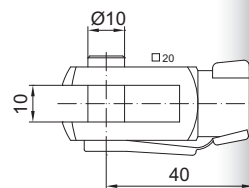


WG 35

Options

- 1 - Racleur de tige
- 2 - Valve latérale QVGZ
- 4 - Chambre d'huile
- 5 - Valve
- 6 - Tube de protection
- 7 - Piston flottant
- 8 - Béquille de verrouillage mécanique
- B3 - Système d'étanchéité

GG 40



QV GZ

Existe en inox 303/304 et 316

AG 43

