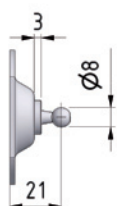
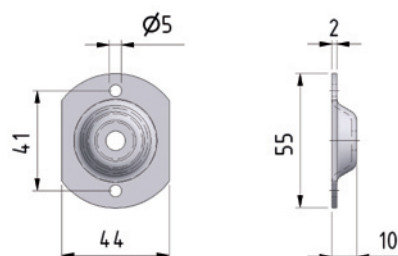
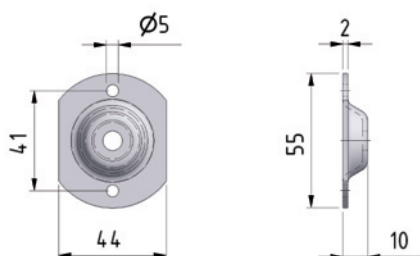


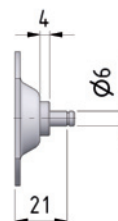
## Support rond - Rundbeschlag

**Matériau** Acier zingué - **Material** Stahl blau verzinkt  
**Option** Acier inoxydable - **Optional** Edelstahl W.1.4404/AISI 316 (V4)

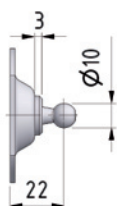
### BA 20 / BA 20 V4



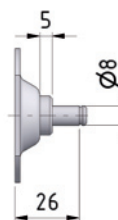
BA 20 K08  
BA 20 K08 V4  
max. 500 N



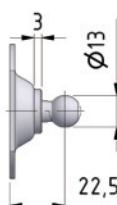
BA 20 Z06  
BA 20 Z06 V4  
max. 500 N



BA 20 K10  
BA 20 K10 V4  
max. 800 N



BA 20 Z08  
BA 20 Z08 V4  
max. 1200 N



BA 20 K13  
BA 20 K13 V4  
max. 1200 N