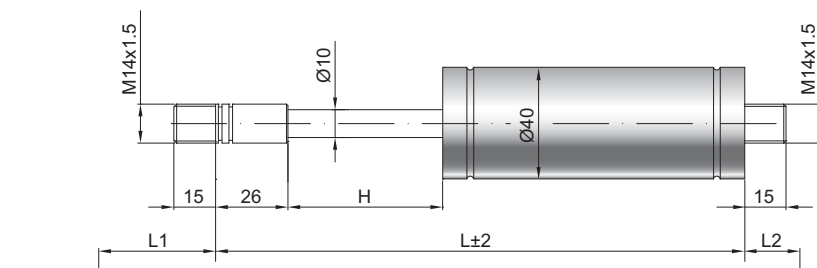


## Ressort à gaz de traction Z10-40

Force de traction F1	200 - 2000 Newton
Progression	40 %
Tige	10 mm, acier chromé
Corps	40 mm, acier laqué noir
Embouts	Acier zingué

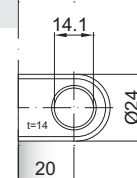
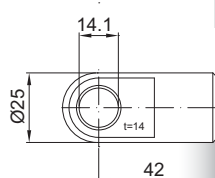
GZ 15

GZ 15



AU 42

AZ 20



Uniquement côté corps

### Details

#### Courses H (mm)

10, 40, 50, 60, 70, 90, 100, 110, 120,  
140, 150, 170, 190, 200, 210, 240, 250,  
290, 340, 350, 390, 440, 490, 590

#### Longueur standard GL

$$L = 2 \times H + 150$$

$$GL = L + L1 + L2$$

#### Equipement de série

Valve côté tige

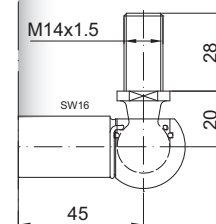
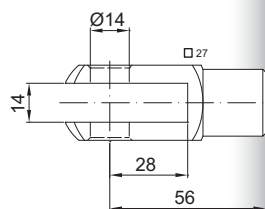
#### Options

- 2 - Valve latérale QVGZ
- 4 - Chambre d'huile
- 6 - Tube de protection
- B3 - Système d'étanchéité
- NT - Basses températures
- HT - Hautes températures

Existe en inox 303/304 et 316

GA 56

WG 45



AG 57

