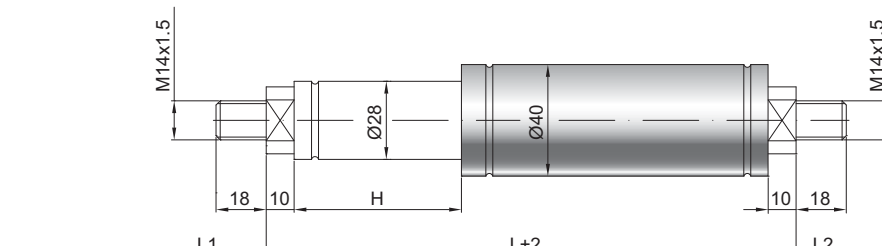


Ressort à gaz de traction Z28-40

Force de traction F1	500 - 5000 Newton
Progression	40 %
Tige	28 mm, acier chromé
Corps	40 mm, acier laqué noir
Embouts	Acier zingué

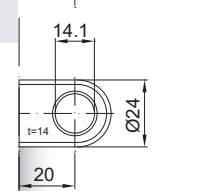
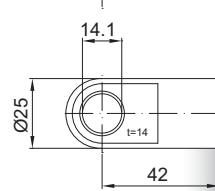
GZ 18

GZ 18



AU 42

AZ 20



Details

Courses H (mm)

50, 80, 100, 120, 150, 200, 250, 300, 350, 400, 450, 500, 600, 700

Longueur standard GL

$$L = 2,5 \times H + 125$$

$$GL = L + L1 + L2$$

Equipement de série

Valve côté tige

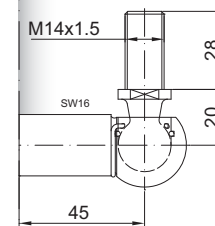
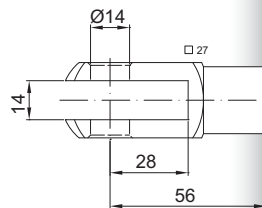
Options

- 2 - Valve latérale
- 6 - Tube de protection

Existe en inox 303/304 et 316

GA 56

WG 45



AG 57

