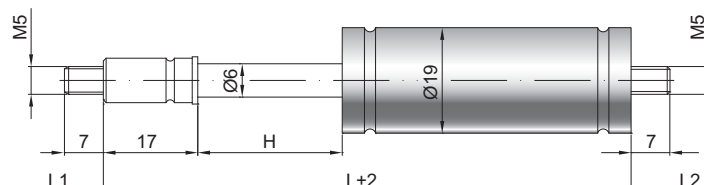


## Ressort à gaz de traction Z06-19

Force de traction F1	30 - 330 Newton
Progression	10 %
Tige	6 mm, acier chromé
Corps	19 mm, acier laqué noir
Embouts	Acier zingué

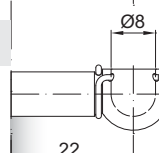
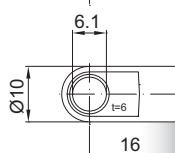
GZ 7

GZ 7



AU 16

PF 22



### Details

#### Courses H (mm)

30, 50, 60, 70, 80, 100, 120, 140, 150, 180, 200, 250, 300

#### Longueur standard GL

$L = 2 \times H + 100$   
 $GL = L + L1 + L2$

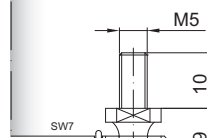
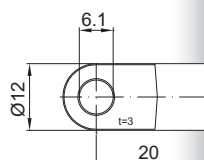
#### Équipement de série

Valve côté tige

#### Options

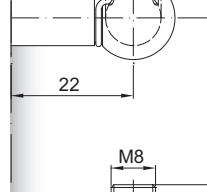
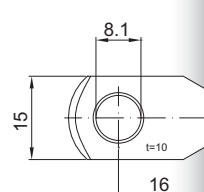
4 - Chambre d'huile  
 6 - Tube de protection  
 B3 - Système d'étanchéité  
 NT - Basses températures  
 HT - Hautes températures

AS 20



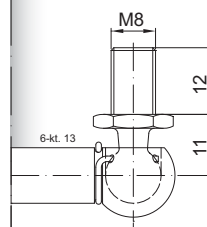
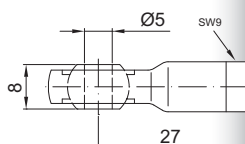
AR 16

WG 22



AG 27

WX 22



Filetages également disponibles en M8

Existe en inox 303/304 et 316

GA 20

