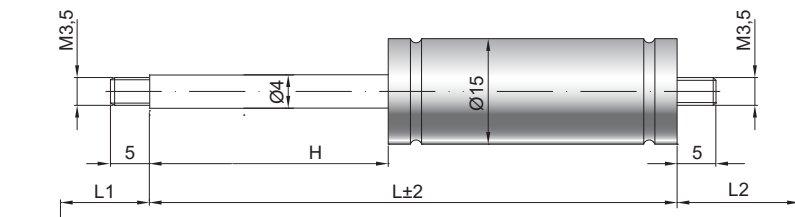


Ressort à gaz de traction Z04-15

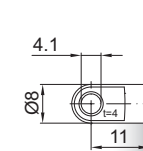
Force de traction F1	40 - 300 Newton
Progression	20 %
Tige	4 mm, acier chromé
Corps	15 mm, acier laqué noir
Embouts	Acier zingué

GZ 05



GZ 05

AU 11

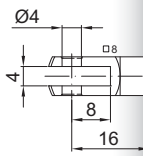


Details

Courses H (mm)

20, 30, 40, 50, 60, 70, 80, 100,
120, 140, 150, 180, 200

GA 16

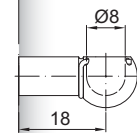


Longueur standard GL

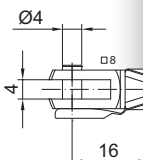
$$L = 2 \times H + 67$$

$$GL = L + L1 + L2$$

PX 18



GG 16



Existe en inox 316

WX 18

