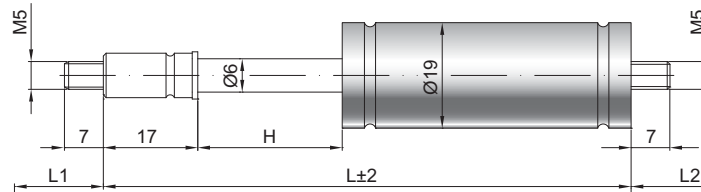


Ressort à gaz de traction Z06-19

Force de traction F1	30 - 330 Newton
Progression	10 %
Tige	6 mm, acier chromé
Corps	19 mm, acier laqué noir
Embouts	Acier zingué

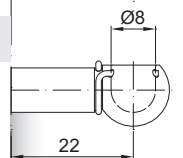
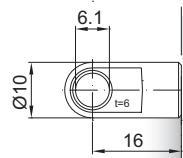
GZ07

GZ 07



AU 16

PF 22



Details

Courses H (mm)

30, 50, 60, 70, 80, 100, 120, 140, 150, 180, 200, 250, 300

Longueur standard GL

$L = 2 \times H + 100$
 $GL = L + L1 + L2$

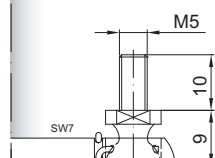
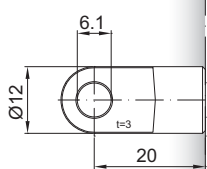
Équipement de série

Valve côté tige

Options

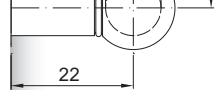
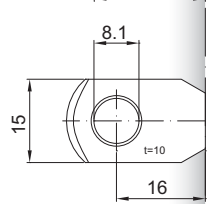
- 4 - Chambre d'huile
- 6 - Tube de protection
- B3 - Système d'étanchéité
- NT - Basses températures
- HT - Hautes températures

AS 20



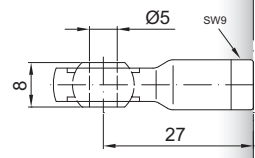
WG 22

AR 16



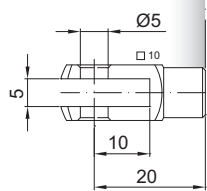
WX 22

AG 27



Filetages également disponibles en M8

GA 20



Existe en inox 303/304 et 316