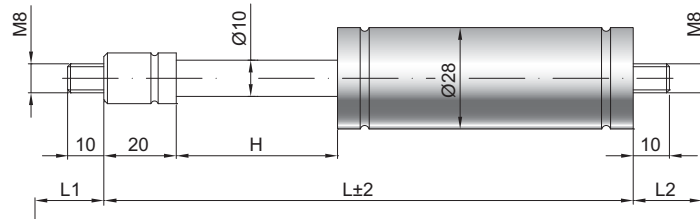


Ressort à gaz de traction Z10-28

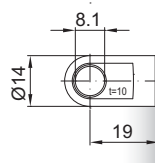
Force de traction F1	150 - 1200 Newton
Progression	20 %
Tige	10 mm, acier chromé
Corps	28 mm, acier laqué noir
Embouts	Acier zingué

GZ 10



GZ 10

AU 19



Details

Courses H (mm)

20, 50, 60, 70, 80, 100, 110, 120, 130,
150, 160, 180, 200, 210, 220, 250, 260, 300,
350, 360, 400, 450, 500, 600

Longueur standard GL

$L = 2 \times H + 100$
 $GL = L + L1 + L2$

Équipement de série

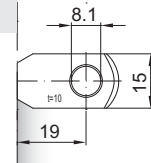
Valve côté tige

Options

2 - Valve latérale QVGZ
4 - Chambre d'huile
6 - Tube de protection
B3 - Système d'étanchéité
NT - Basses températures
HT - Hautes températures

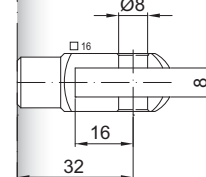
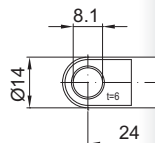
Filetages également disponibles en M8

Existe en inox 303/304 et 316



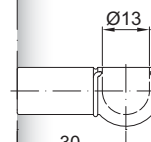
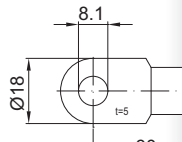
AR 19

AS 24



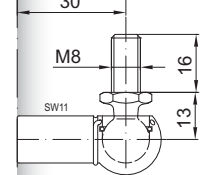
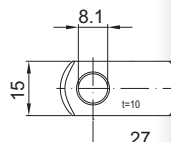
GA 32

AS 30



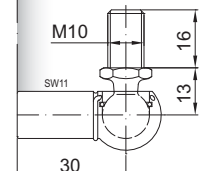
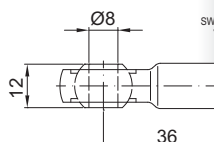
PF 30

AR 27



WG 30

AG 36



WX 30