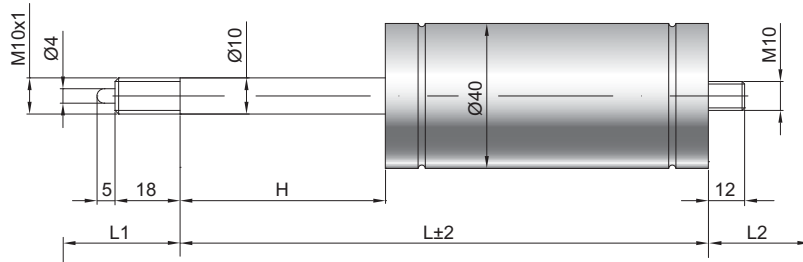


# Ressort à gaz à blocage élastique F10-40

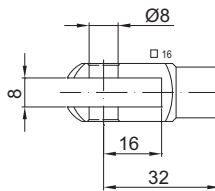
Force de poussée F1	200 - 1200 Newton
Progression	15 %
Tige	10 mm acier chromé
Corps	40 mm acier laqué noir
Embouts	Acier zingué

GZ 18



GZ 12

GX 32



## Details

### Courses H (mm)

10, 15, 20, 25, 30, 40, 50, 55, 60, 70, 80, 90, 100, 110, 120, 125, 130, 140, 150, 155, 170, 190, 200, 210, 220, 230, 240, 290, 340, 390, 440, 490

### Longueur standard GL

$$L = 2 \times H + 90$$

$$GL = L + L1 + L2$$

### Déclenchement

Longueur 5 mm  
Course 2 - 4 mm



Voir nos systèmes de déblocage

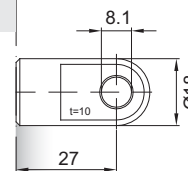
### Equipement de série

Valve côté corps

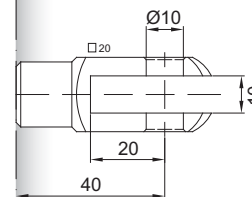
### Options

- 3 - Etanchéité de la tige
- 4 - Chambre d'huile
- 6 - Tube de protection

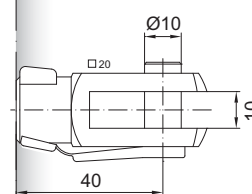
Existe en inox 303/304 et 316 (sur demande)



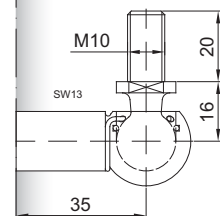
AU 27



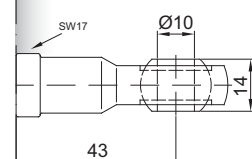
GA 40



GG 40



WG 35



AG 43