



FARROS

Grinding Systems

The Original

Since 1972



Company

Building in Frauenfeld



We are located in the City of Frauenfeld in the North-East of Switzerland only 40 km from the International Airport Zurich.

Workshop

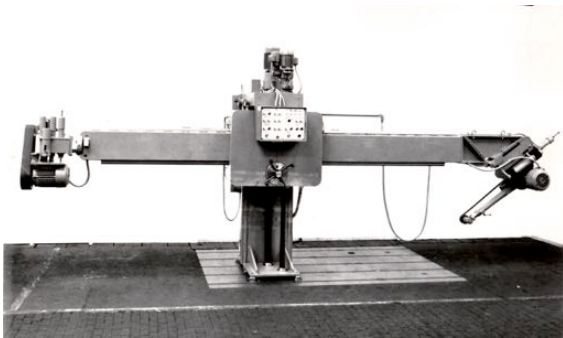


From the development and after to the assembly, as well the final machine erection we do in our facility. Including the electrical and PLC integration we do in our workshop.

Functionality test and preparation for the transport by truck or container.

History

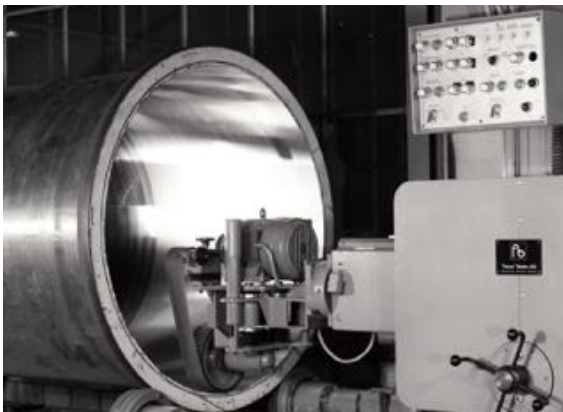
GF 1969



1940, the company was founded by Ernest Blatter under the name **Blatter AG**. The first production facility was located in Winterthur.

1970, the company was taken over by former employees. **Farros Blatter AG** in Winterthur. The company has grown into the world leading manufacturer and supplier of specialized grinding machines for many different products including rolls for the paper industry and weld preparation facilities for pressure vessels.

fb 1972



1997, Farros Blatter AG was taken over by the Finnish- Swedish group METSO. Their interest has been focussed onto the products and patents in the paper sector.

2004, Marc Hönes and Jürg Widmer purchased the vessel grinding machine sector and established the new company **FARROS Grinding Systems GmbH** at Matzingen.

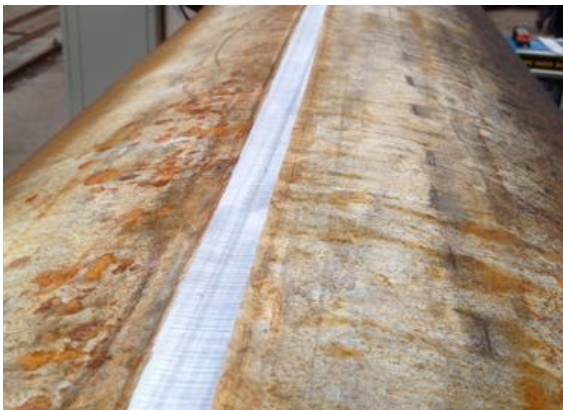
2011, the company could move in the new building in Frauenfeld.

Application

Surface Grinding and polishing



Weld Seam Grinding



Application

Weld Seam Back Gouging



Edge Preparation



Column - Boom

BSA - 1000



Application: Dished ends
Cones

Horizontal: 2 - 3 m
Vertical: 1 - 1.4 m

Grinding Head: H - 660

BSA - 2000



Application: Dished ends
Vessel (Shells)

Horizontal: 3 - 4 m
Vertical: 1.5 - 2 m

Grinding Head: H - 660
MS - 500
MS - 230
U - 1100

Column - Boom

BSA - 3000



Application: Vessels (Shells)

Pipes

Horizontal: 4 - 5 m

Vertical: 1,85 - 3 m

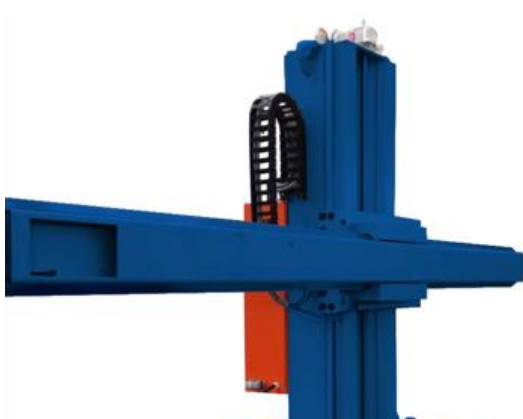
Grinding Head: KS-760

MS-1050

KS-1200

U-1100

BSA - 4000



Application: Dished ends
Vessel (Shells)

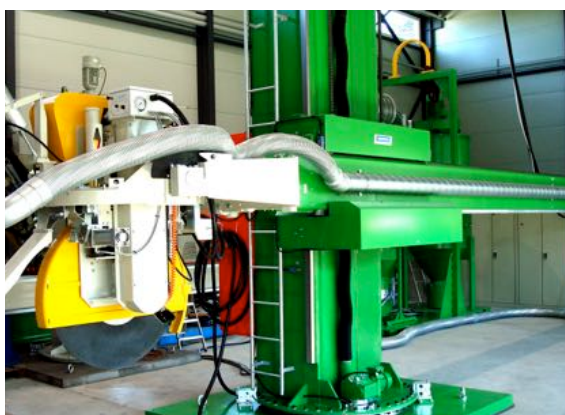
Horizontal: 3 - 4 m

Vertical: 1.5 - 2 m

Grinding Head: KS-1200

Column - Boom

BSA - 5000



Application: Heavy Dished ends
Heavy Vessels

Horizontal: 5 - 8 m
Vertical: 1,85 - 4 m

Grinding Head: H - 1450
KS - 1210

Out Side Grinding

ASA small



Application: Pipe - outside
Cirumferential
Weld Seam

Grinding Head: KS-760

ASA big



Application: Pipe - outside
Circumferential
Longitudinal
Weld seam

Grinding Head: KS-1200
MS-1050

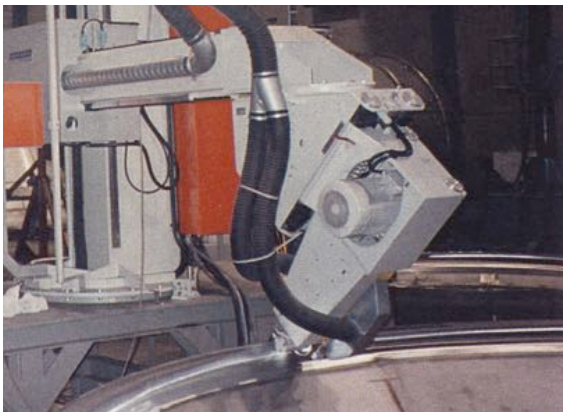
Grinding Head

H - 660 ▷ small and medium Dished Ends



Application:	Dished ends "light" Cones Hemisphere
Dimensions:	ø 600 - 5'000 mm
Motor:	9 kW
Contact wheel:	ø (55) - 150 mm
Belt dimension:	2250 mm

H - 1450 ▷ heavy Dished Ends



Application:	Dished ends "heavy"
Dimensions:	ø 2'500 - 10'000 mm
Motor:	11 kW
Contact wheel:	ø 200 mm
Belt dimension:	80 x 2600 mm

Grinding Head

Universal

U - 1100 ► utilize for all applications



Application: Dished ends

Cones

Vessels

Dimensions: smallest \varnothing 1'200 mm

Motor: 11 kW

Contact wheel: \varnothing 225 mm

Belt dimension: 50 - 100 x 2'250 mm

Grinding Head

MS - 230 ▷ "tube version"



Application: Small Vessels

Pipes

Tubes

Dimensions: smallest \varnothing 230 mm
length 2'500 mm

Motor: 4 kW

Contact wheel: \varnothing 100 mm

Belt dimension: 465 mm

Vessel

MS - 400 ▷ small vessel



Application: Small Vessels

Dimensions: smallest \varnothing 460 mm

Motor: 7,5 kW

Contact wheel: \varnothing (175) 200 mm

Belt dimension: 50 / 75 x 1'000 mm

50 / 75 x 1'500 mm

Grinding Head

MS - 500 ▷ with fork



Application:	Vessels
Dimensions:	smallest iø 550 mm
Motor:	9 kW
Contact wheel:	ø (225) 300 mm
Belt dimension:	50 / 100 x 1'100 mm 50 / 100 x 1'700 mm

Vessel

MS - 1050 ▷ heavy vessel



Application:	Heavy Vessels
Dimensions:	smallest iø 1050 mm
Motor:	11 kW
Contact wheel:	ø 300 mm
Belt dimension:	50 / 100 x 2'250 mm

Grinding Head

KS - 760 ▶ combined Wheel and Belt grinding



Application:	Back gouging Weld seam grinding
Dimensions:	smallest iø 760 mm
Motor:	7,5 kW
grinding disc	ø 400 mm thickness 6 - 16 mm
Contact wheel:	ø 225 mm
Belt dimension:	75 x 1500 mm

KS - 1200 ▶ combined Wheel and Belt grinding



Application:	Back gouging Weld seam grinding
Dimensions:	smallest iø 1450 mm
Motor:	18,5 kW
grinding disc	ø 650 mm thickness 8 - 20 mm
Contact wheel:	ø 300 mm
Belt dimension:	100 x 2800 mm

Grinding Head

KS - 1210 ▷ combined Wheel and Belt grinding



Multi - Purpose

Application:	Back gouging Weld seam grinding
Dimensions:	smallest iø 1600 mm
Motor:	22 kW
grinding disc	ø 900 mm thickness 8 - 20 mm
Contact wheel:	ø 300 mm
Belt dimension:	100 x 3250 mm

Dust Filter Exhaust Systems



Rotation Systems

Turning Table 1 - 30 rpm



Roller Positioner





Product range:

	Grinding Head									
	Combi			Vessel					Dished end	
	KS-760	KS-1200	KS-1210	MS-230	MS-400	MS-500	MS-1050	U-1100	H-660	H-1450
Installation:										
External:										
ASA	Possible	Ideal	Ideal			Possible	Possible			
Combined:										
BSA – 1000									Ideal	
BSA – 2000 / 4 m	Possible			Ideal	Ideal	Ideal		Ideal	Ideal	
BSA – 3000 / 4 m	Ideal	Ideal	Ideal	Ideal	Ideal	Ideal	Ideal	Ideal	Ideal	Ideal
BSA – 5000 / 8 m	Ideal	Ideal	Ideal	Ideal	Ideal	Ideal	Ideal	Ideal	Ideal	Ideal

Ideal application
 Possible application

Service Benefit

Spare Parts



- ▷ Mechanical and Electrical Parts
- ▷ Expendable items
- ▷ Contact Wheels
- ▷ Grinding Belts
- ▷ Grinding Wheels

Training



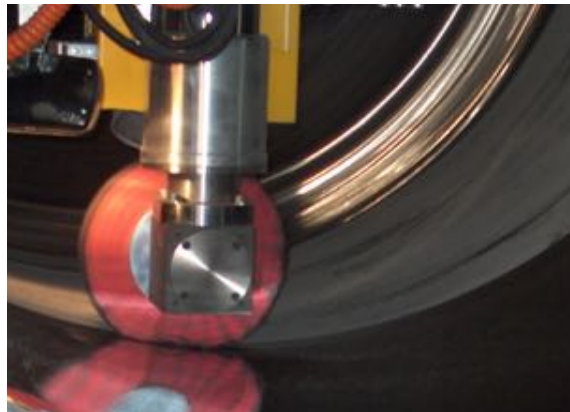
- ▷ Machine briefing
- ▷ Grinding Training
- ▷ Abrasive selection
- ▷ Machine inspection

Special Installations

Dished Head Edge



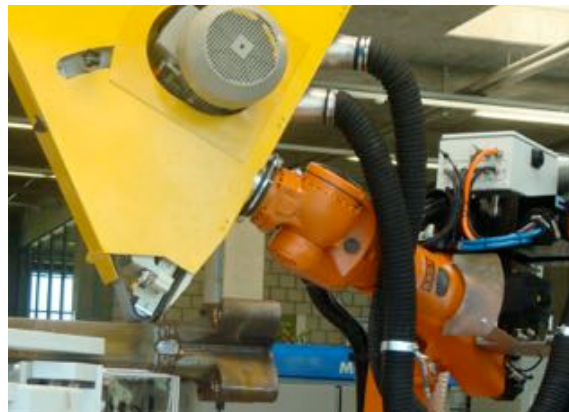
Polishing



Portal Grinding



Robotic Grinding





Please get in contact with us for any grinding requirement



DISTRIBUTEUR EXCLUSIF EN FRANCE, ALGERIE, MAROC ET TUNISIE POUR :



6 Allée des Carrières
Z.A.E Des Portes de la Forêt
F-77090 COLLEGIEN

Tél. : +33 (0) 1 64 30 92 47
Fax : +33 (0) 1 64 30 81 92
Email : info@eckotech.fr
Site internet : www.eckotech.fr

SARL au capital de 100 000 €
SIRET : 350 241 378 00016
Code APE : 4662Z - N° EORI : FR35024137800016
N° d'identification européenne : FR 67 350 241 378