

Autres dimensions ou filetages : nous consulter !

Matériaux standards : caoutchouc naturel NR / acier zingué ST37.

Sur demande : caoutchoucs SBR, NBR, EPDM ou CR (néoprène), aciers inox 304 ou 316, duretés de 20 à 90 Sh.

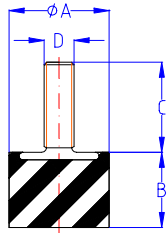


Fig. 1

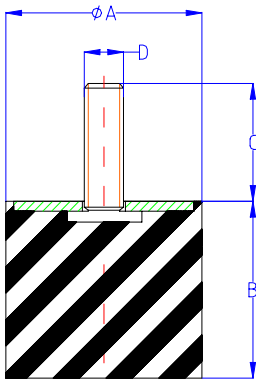


Fig. 2

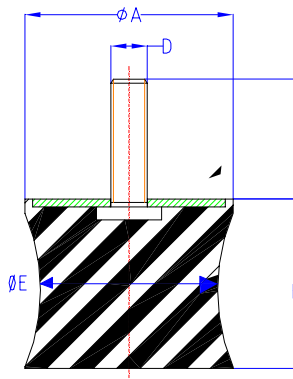


Fig. 3

REFERENCIA RÉFÉRENCE REFERENCE ART. NR.	Fig	Dureza Dureté Hardness Härte	DIMENSIONES (mm) DIMENSIONS (mm) DIMENSIONS (mm) ABMESSUNGEN (mm)					COMPRESION COMPRESSION COMPRESSION DRUCKBELASTUNG	
		Shöre	ϕA	B	ϕE	D	C	Carga Charge Load Last (Kg)	Flecha Flèche Deflection Federweg (mm)
R									
R 000	1	60	012	13		M-05	10	15	3,0±0,5
R 1610	1	60	016	10		M-05	12	20	1,5±0,5
R 1615	1	60	016	15		M-05	12	15	2,5±0,5
R 1620	1	60	016	20		M-05	12	15	3,5±0,5
R 1625	1	60	016	25		M-05	12	15	4,5±1,0
R 2008	1	60	020	08		M-06	15	45	1,6±0,5
R 2015	1	60	020	15		M-06	15	35	3,0±0,5
R 2020	1	60	020	20		M-06	15	25	4,0±1,0
R 2025	1	60	020	25		M-06	15	25	5,0±1,0
R 2030	1	60	020	30		M-06	15	25	6,0±1,0
R 2510	1	50	025	10		M-08	20	50	2,0±0,5
R 2515	1	50	025	15		M-08	20	40	3,0±0,5
R 2520	1	50	025	20		M-08	20	40	4,0±0,5
R 2525	1	50	025	25		M-08	20	40	5,0±1,0
R 2530	1	50	025	30		M-08	20	40	6,0±1,0
R 2540	1	50	025	40		M-08	20	40	8,0±1,0
R 3010	1	50	030	10		M-08	20	80	2,0±0,5
R 3015	1	50	030	15		M-08	20	80	3,0±0,5
R 00	1	50	028	22		M-08	20	60	5,0±1,0
R 3020	1	50	030	20		M-08	20	80	4,0±0,5
R 3030	1	50	030	30		M-08	20	60	6,0±1,0
R 3040	1	50	030	40		M-08	20	60	8,0±1,0
R 4020	2	50	040	20		M-10	25	140	4,0±0,5
R 4028	2	50	040	28		M-10	25	100	5,5±1,0
R 4035	2	50	040	35		M-10	25	100	7,0±1,0
R 4040	2	50	040	40		M-10	25	100	8,0±1,0
R 4045	2	50	040	45		M-10	25	90	9,0±1,0
R 5020	2	50	050	20		M-10	25	300	4,0±0,5
R 5025	2	50	050	25		M-10	25	175	5,0±1,0
R 5030	2	50	050	30		M-10	25	160	6,0±1,0
R 5035	2	50	050	35		M-10	25	160	7,0±1,0
R 5040	2	50	050	40		M-10	25	155	8,0±1,0
R 5045	2	50	050	45		M-10	25	150	9,0±1,0
R 5060	2	50	050	60		M-10	25	130	12,0±1,5
R 6025	2	50	060	25		M-10	25	400	5,0±1,0
R 6035	2	50	060	35		M-10	25	300	7,0±1,0
R 6045	2	50	060	45		M-10	25	250	9,0±1,0
R 4-N	3	50	060	58	48	M-10	25	150	10,0±1,0
R 6060	2	50	060	60		M-10	25	225	12,0±1,5
R 7035 M10	2	50	070	35		M-10	25	450	7,0±1,0
R 7050 M10	2	50	070	50		M-10	25	300	10,0±1,0
R 7070 M10	2	50	070	70		M-10	25	300	14,0±1,5
R 7035	2	50	070	35		M-12	35	450	7,0±1,0
R 7050	2	50	070	50		M-12	35	300	10,0±1,0
R 7070	2	50	070	70		M-12	35	300	14,0±1,5
R 8030	2	50	080	30		M-14	35	950	6,0±1,0
R 8040	2	50	080	40		M-14	35	600	8,0±1,0
R 8055	2	50	080	55		M-14	35	500	11,0±1,5
R 5-N	3	50	080	65	68	M-14	35	350	14,0±1,5
R 6-N	3	50	095	74	76	M-16	42	450	15,0±2,0

Autres dimensions ou filetages : nous consulter !

Matériaux standards : caoutchouc naturel NR / acier zingué ST37.

Sur demande : caoutchoucs SBR, NBR, EPDM ou CR (néoprène), aciers inox 304 ou 316, duretés de 20 à 90 Sh.

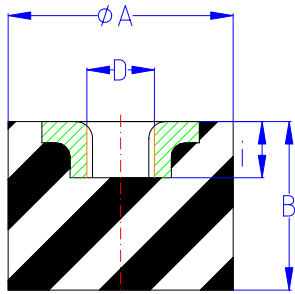


Fig. 1

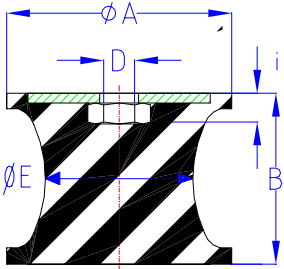


Fig. 2

REFERENCIA RÉFÉRENCE REFERENCE ART. NR.	Fig	Dureza Dureté Hardness Härte	DIMENSIONES (mm) DIMENSIONS (mm) DIMENSIONS (mm) ABMESSUNGEN (mm)					COMPRESION COMPRESSION COMPRESSION DRUCKBELASTUNG	
TH		Shöre	Ø A	B	Ø E	D	C	Carga Charge Load Last (Kg)	Flecha Flèche Deflection Federweg (mm)
TH 1610	1	60	016	10		M-05	5	20	1,5±0,5
TH 1615	1	60	016	15		M-05	5	15	2,5±0,5
TH 1620	1	60	016	20		M-05	5	15	3,5±0,5
TH 1625	1	60	016	25		M-05	5	15	4,5±1,0
TH 2008	1	60	020	08		M-06	5	45	1,6±0,5
TH 2015	1	60	020	15		M-06	5	35	3,0±0,5
TH 2020	1	60	020	20		M-06	5	25	4,0±1,0
TH 2025	1	60	020	25		M-06	5	25	5,0±1,0
TH 2030	1	60	020	30		M-06	5	25	6,0±1,0
TH 2510	1	50	025	10		M-08	6	50	2,0±0,5
TH 2515	1	50	025	15		M-08	6	40	3,0±0,5
TH 2520	1	50	025	20		M-08	6	40	4,0±0,5
TH 2525	1	50	025	25		M-08	6	40	5,0±1,0
TH 2530	1	50	025	30		M-08	6	40	6,0±1,0
TH 2540	1	50	025	40		M-08	6	40	8,0±1,0
TH 3010	1	50	030	10		M-08	6	80	2,0±0,5
TH 3015	1	50	030	15		M-08	6	80	3,0±0,5
TH 00	1	50	028	22		M-08	6	60	5,0±1,0
TH 3020	1	50	030	20		M-08	6	80	4,0±0,5
TH 3030	1	50	030	30		M-08	6	60	6,0±1,0
TH 3040	1	50	030	40		M-08	6	60	8,0±1,0
TH 4020	1	50	040	20		M-10	7	140	4,0±0,5
TH 4028	1	50	040	28		M-10	7	100	5,5±1,0
TH 4035	1	50	040	35		M-10	7	100	7,0±1,0
TH 4040	1	50	040	40		M-10	7	100	8,0±1,0
TH 4045	1	50	040	45		M-10	7	90	9,0±1,0
TH 5020	1	50	050	20		M-10	7	300	4,0±0,5
TH 5025	1	50	050	25		M-10	7	175	5,0±1,0
TH 5030	1	50	050	30		M-10	7	160	6,0±1,0
TH 5035	1	50	050	35		M-10	7	160	7,0±1,0
TH 5040	1	50	050	40		M-10	7	155	8,0±1,0
TH 5045	1	50	050	45		M-10	7	150	9,0±1,0
TH 5060	1	50	050	60		M-10	7	130	12,0±1,5
TH 6025	1	50	060	25		M-10	7	400	5,0±1,0
TH 6035	1	50	060	35		M-10	7	300	7,0±1,0
TH 6045	1	50	060	45		M-10	7	250	9,0±1,0
TH 4-N	2	50	060	58	48	M-10	7	150	10,0±1,0
TH 6060	1	50	060	60		M-10	7	225	12,0±1,5
TH 7035 M10	1	50	070	35		M-10	9	450	7,0±1,0
TH 7050 M10	1	50	070	50		M-10	9	300	10,0±1,0
TH 7070 M10	1	50	070	70		M-10	9	300	14,0±1,5
TH 7035	1	50	070	35		M-12	11	450	7,0±1,0
TH 7050	1	50	070	50		M-12	11	300	10,0±1,0
TH 7070	1	50	070	70		M-12	11	300	14,0±1,5
TH 8030	1	50	080	30		M-14	11	950	6,0±1,0
TH 8040	1	50	080	40		M-14	11	600	8,0±1,0
TH 8055	1	50	080	55		M-14	11	500	11,0±1,5
TH 5-N	2	50	080	65	68	M-14	11	350	14,0±1,5
TH 6-N	2	50	095	74	76	M-16	15	450	15,0±2,0

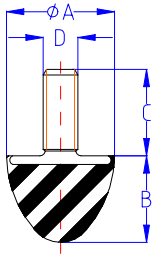


Fig. 1

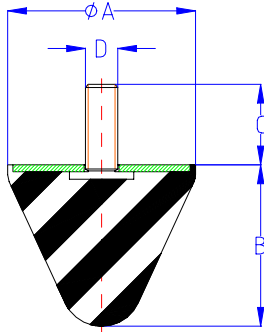


Fig. 2

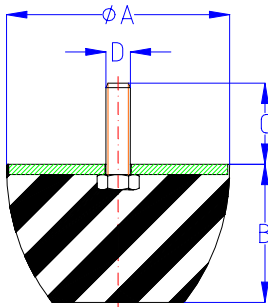


Fig. 3

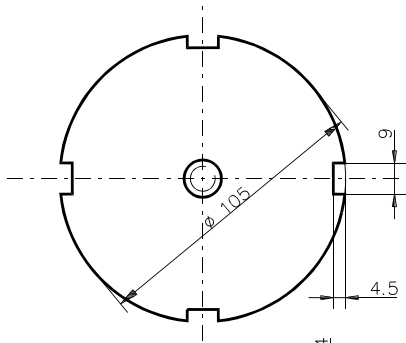
REFERENCIA RÉFÉRENCE REFERENCE ART. NR.	Fig	Dureza Dureté Hardness Härte Shöre	DIMENSIONES (mm) DIMENSIONS (mm) DIMENSIONS (mm) ABMESSUNGEN (mm)				COMPRESION COMPRESSION COMPRESSION DRUCKBELASTUNG		CHOQUE CHOC SHOCK STOSS	
TP			Ø A	B	D	C	Carga Charge Load Last (Kg)	Flecha Flèche Deflection Federweg (mm)	Carga Charge Load Last (Kg)	Flecha Flèche Deflection Federweg (mm)
TP 25	1	60	025	20	M-08	20	40	4,0±0,5	100	8,0±2,0
TP 30	1	60	030	30	M-06	15	50	6,0±1,0	140	12,0±2,0
TP 30 M08	1	60	030	30	M-08	20	50	6,0±1,0	140	12,0±2,0
TP 5050	2	60	050	50	M-08	20	90	10,0±1,5	335	20,0±3,0
TP 5050 M10	2	60	050	50	M-10	25	90	10,0±1,5	335	20,0±3,0
TP 5058	2	60	050	58	M-08	20	90	12,0±2,0	370	23,0±3,0
TP 5058 M10	2	60	050	58	M-10	25	90	12,0±2,0	370	23,0±3,0
TP 5065	2	60	050	65	M-08	20	90	13,0±2,0	370	26,0±4,0
TP 5065 M10	2	60	050	65	M-10	25	90	13,0±2,0	370	26,0±4,0
TP70	2	60	070	60	M-12	35	160	12,0±2,0	550	24,0±3,0
TP85	3	60	084	53	M-12	35	375	11,0±2,0	1.250	21,0±2,5
TP95	2	60	095	80	M-16	42	350	16,0±2,0	1.100	32,0±4,0
TP96	3	60	095	47	M-16	42	675	9,0±1,0	1.600	19,0±2,0
TP120	3	75	120	75	M-16	45	2.000	15,0±2,0	4.500	30,0±4,0
TP220	3	60	220	136	M-24	80	3.800	27,0±3,0	10.000	54,0±6,0

Autres dimensions ou filetages : nous consulter !

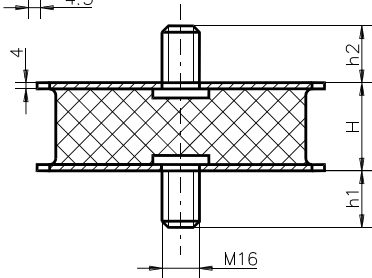
Matériaux standards : caoutchouc naturel NR / acier zingué ST37.

Sur demande : caoutchoucs SBR, NBR, EPDM ou CR (néoprène), aciers inox 304 ou 316, duretés de 20 à 90 Sh.

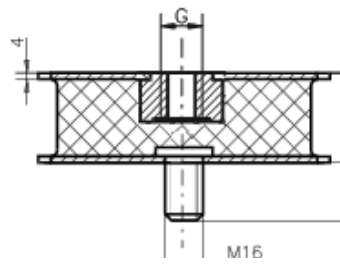
KR



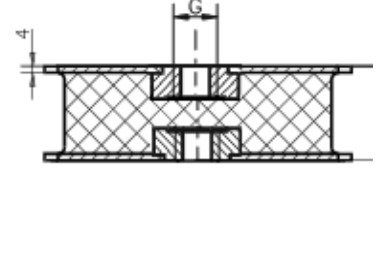
Type	D	H	h1	h2
KR-1	105	55	30	30
KR-2	105	40	30	25



KR-A

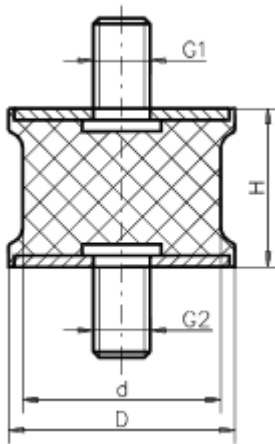


KR-B

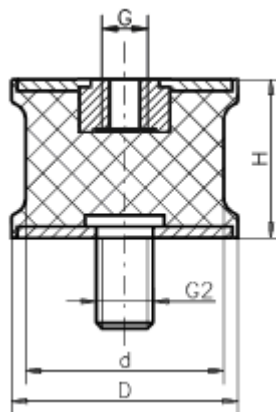


KR-C

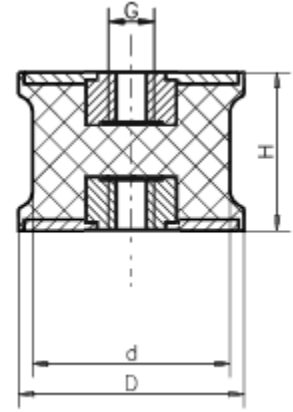
SP-1



SP-2

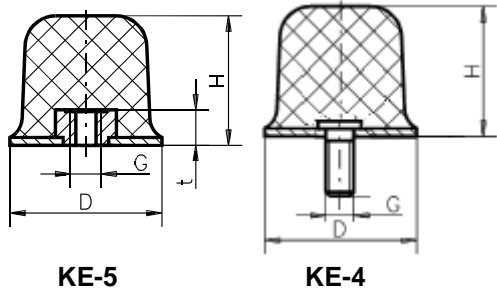


SP-3



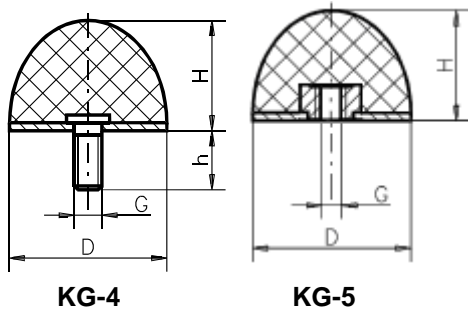
SP

D/d-H	D	d	H	G1	G2
25/22-22	26	22	22	M8x10	M8x18
40/35-28	40	35	28	M10x16	M10x20
46/40-25	46	40	25	M10x28	M10x28
75/70-40	75	70	40	M12x37	M12x37
100/95-55	100	95	55	M16x41	M16x41
100/95-75	100	95	75	M16x45	M16x45



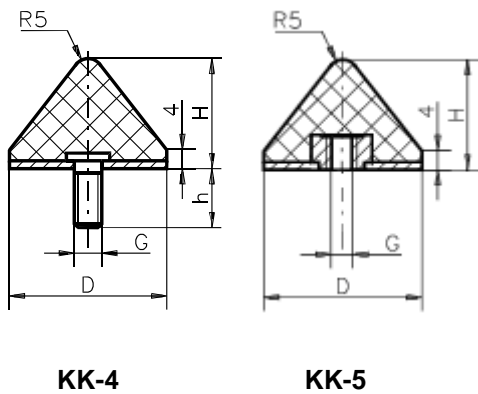
KE

Type	D	H	G	h
50/35	50	35	M10	10



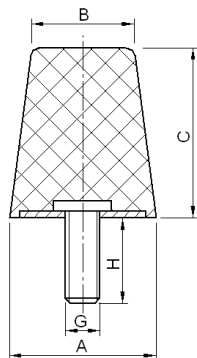
KG

D/H	D	H	G	h
25/13	25	13	M6	10
25/15	25	15	M6	18
30/26	30	26	M8	48



KK

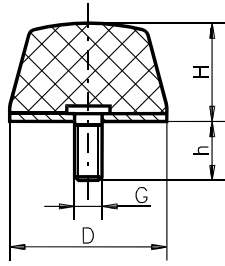
D/H	D	H	G	h
24/17	24	17	M8	20
25/16	25	16	M8	20
40/24	40	24	M8	28
50/28	50	28	M8	28
50/45	50	45	M10	35
60/45	60	45	M10	28
85/65	85	65	M12	37



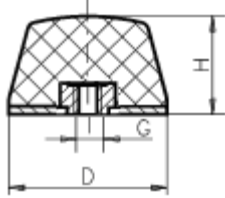
KH

Type	A	B	C	M Gxh
KH-1	43	30	50	M10x25
KH-2	43	30	35	M10x27
KH-3	38	30	35	M10x27
KH-4	63	57,5	50	M 10x31

KD

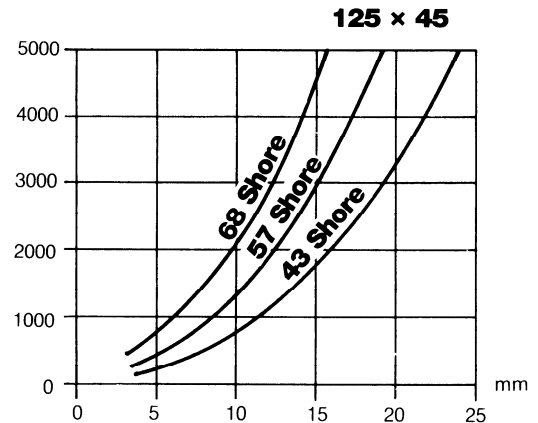
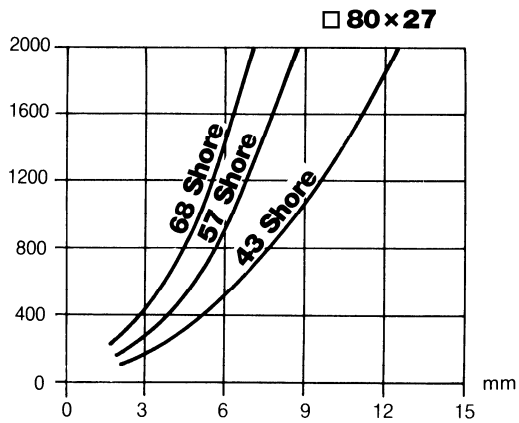
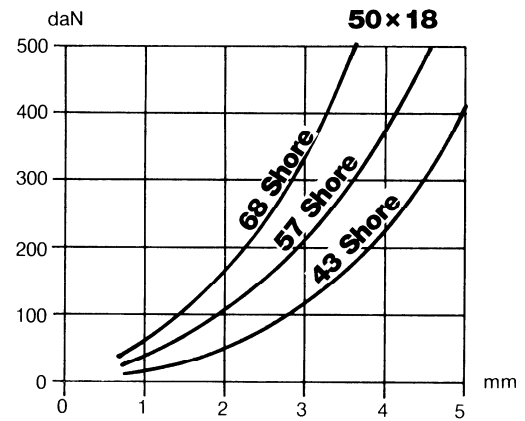
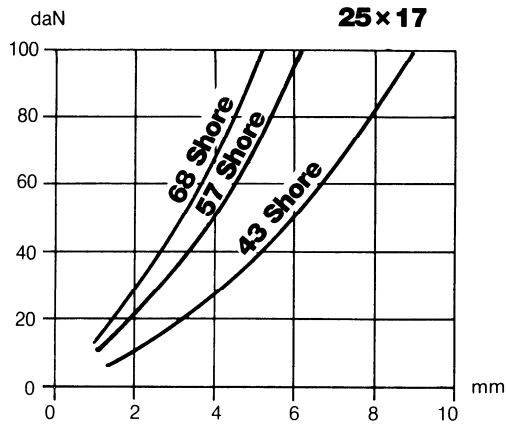


KD-4

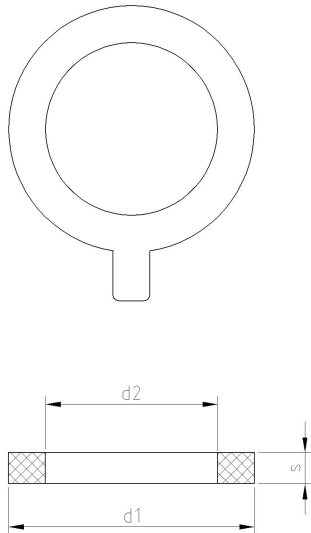


KD-5

D/H	D	H	G	H
12/12	12	12	M4	10
14/6,3	14	6,3	M4	4
25/12	25	12	M6	18
25/14	25	14	M4	10
25/17	25	17	M6	18
35/40 Sphère	35	40	M8	23
45/21	45	21	M8	46
50/18	50	18	M10	28
50/20 Carré	□50	20	M10	28
50/50	50	50	M10	28
80/27 Carré	□80	27	M12	37
125/45	125	45	M16	45

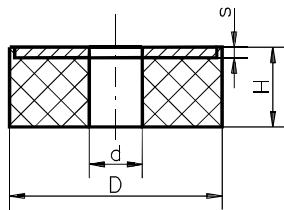


RONDELLES FREIN / BOLT-LOCK SEAL



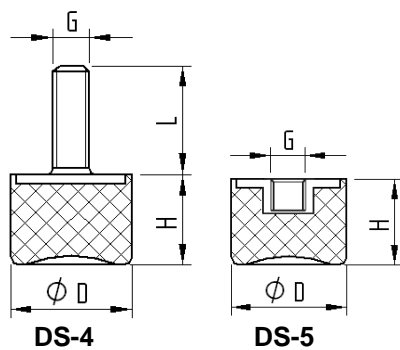
Type	d1	d2	S mm	DN(NA)
40/86	40	86	3	40
49/91,2	49	91,2	3	50
90/138	90	138	3	80
113/160	113	160	3	100
140/191	140	191	3	125
163/215	163	215	3	150
222/267	222	267	3	200
274/324	274	324	3	250
294/363	294	363	3	300
343/412	343	412	5,5	350
392/470	392	470	5,5	400
519/583	519	583	4	500
608/681	608	681	4,5	600

IS



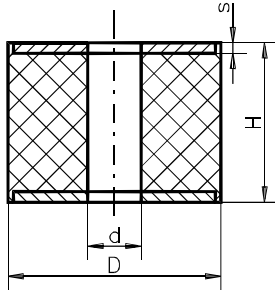
D/d-H	D	d	H	s
40/10-10	40	10	10	2
62/14-6	62	14	6	3
80/21-30	80	21	30	2
100/21-30	100	21	30	4
100/21-40	100	21	40	4
100/25-40	100	25	40	4
100/56-19	100	56	19	3
100/60-30	100	60	30	4
120/21-30	120	21	30	4
120/25-40	120	25	40	4
150/32-40	150	32	40	4

DS



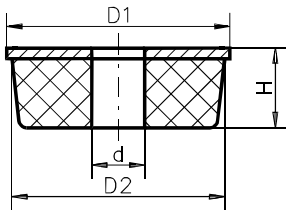
Type	D	H	G	h
15/14	15	14	M4	13
20/23,5	20	23,5	M6	18
25/18,5	25	18,5	M6	18
40/28	40	28	M8	10
50/28	50	28	M10	33
70/43	70	43	M10	28
75/37	75	37	M12	37

GH



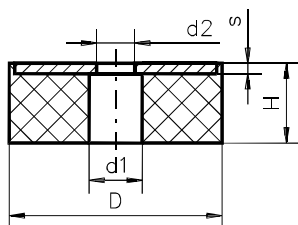
D/d-H	D	d	H	s
15/6-25	15	6	25	2
20/6-25	20	6	25	2
40/13-20	40	13	20	3
40/13-30	40	13	30	3
40/13-40	40	13	40	3
50/17-20	50	13	20	3
50/17-40	50	17	40	3
50/17-50	50	17	50	3
50/21-15	50	21	15	3
50/21-30	50	21	30	3
60/21-50	60	21	50	4
75/25-55	75	25	55	3
80/21-30	80	21	30	3
100/21-40	100	21	40	4
100/31-40	100	31	40	4
100/33-75	100	33	75	5
120/41-40	120	41	40	5
120/51-40	120	51	40	5
150/51-100	150	51	100	6
200/32-100	200	32	100	8
200/61-100	200	61	100	8

RB



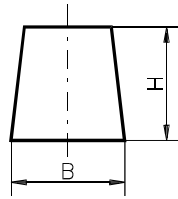
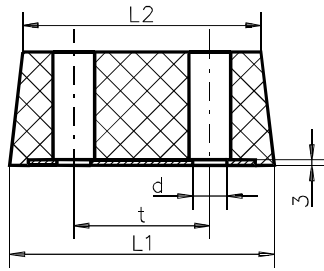
Type	D1	D2	d	H
1	42	40	18	23
2	62	60	21	33
3	72	70	21	33
4	82	80	25	40
5	102	100	32	54
6	122	120	38	46

GK

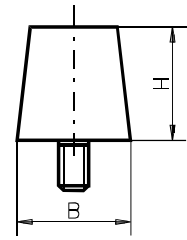
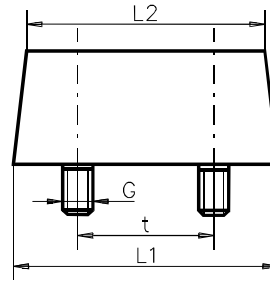


D/H	D	H	d1	d2	s
30/16	30	16	16	9	3
40/16	40	16	16	9	3
40/20	40	20	17	9	3
50/16	50	16	20	11	3
50/20	50	20	22	11	3
60/18	60	18	25	25	3
60/20	60	20	25	11	4
75/25	75	25	30	13	6
80/20	80	20	32	13	4
100/25	100	25	40	13	6
100/30	100	30	60	33	6
125/25	125	25	50	17	6

RP-OG



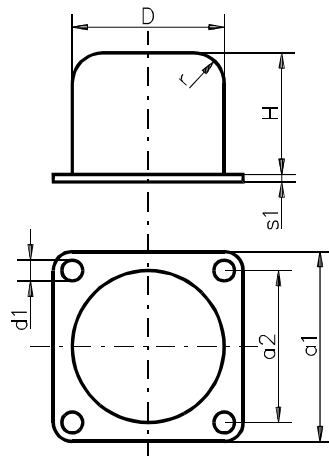
RP-2G



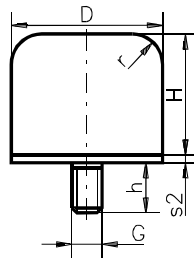
Type	L1	L2	B	H	t	G	d
150	150	136	60	60	70	M10x32	11
200	200	168	100	100	90	M12x36	13

TAMPONS ANTICHOCS / BUTOIRS

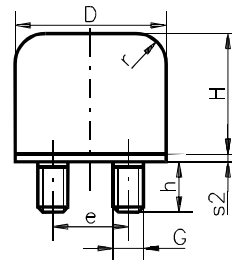
GP-QP



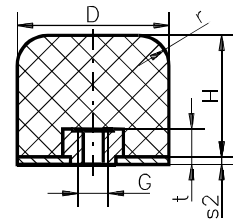
GP-1G



GP-2G

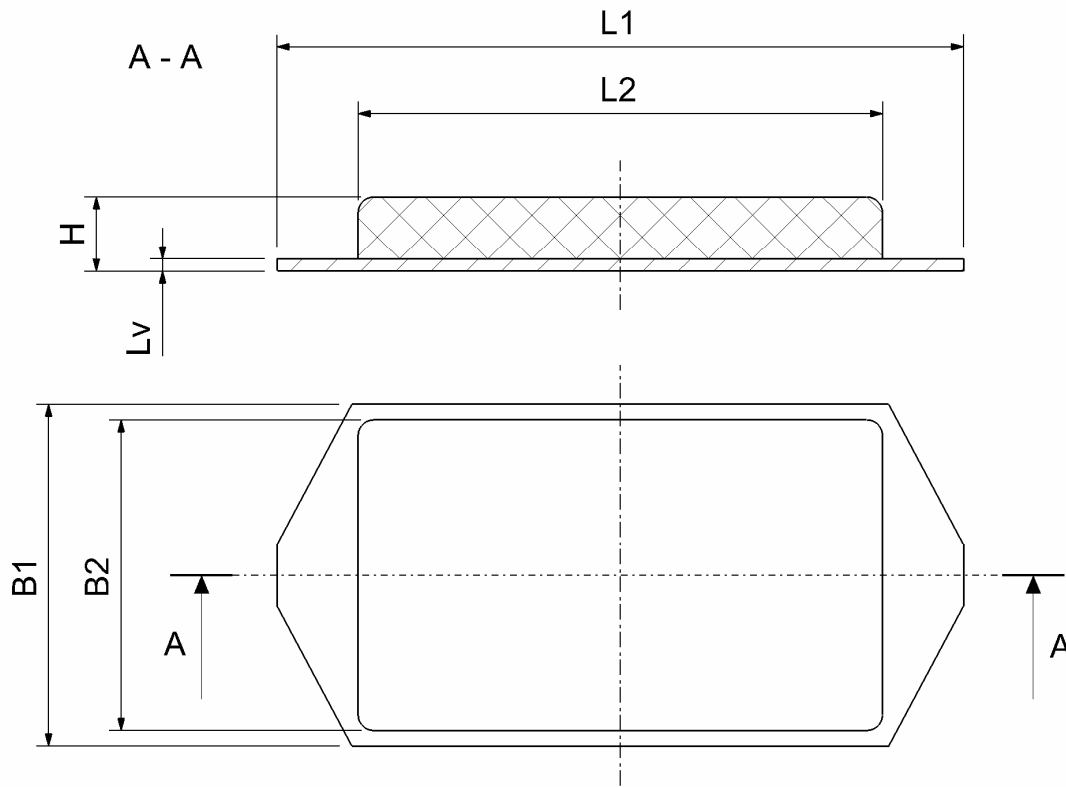


GP-1I



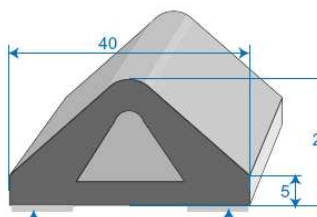
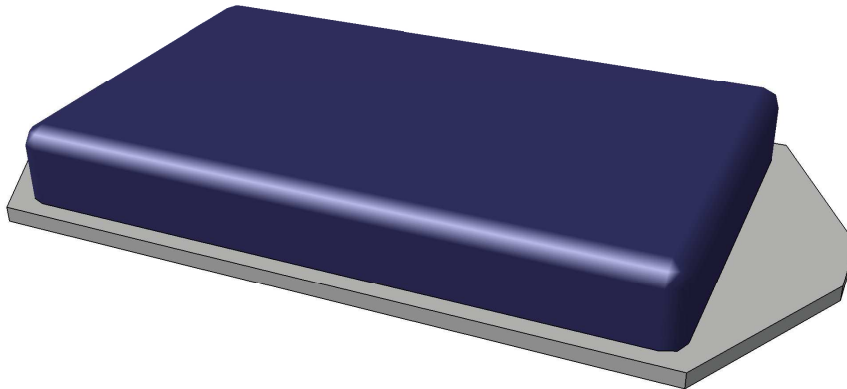
Type	D mm	H mm	Measurement										Load capacity		
			a1 mm	a2 mm	d mm	G mm	e mm	h mm	r mm	s1 mm	s2 mm	t mm	f mm	F kN	W J
40x32	40	32	50	40	5,5	M8	-	23	8	2	2	8	18	15	70
50x40	50	40	63	50	6,5	M10	-	28	10	3	2	10	22	24	140
63x50	63	50	80	63	6,5	M10	-	28	12,5	4	3	10	28	37,5	280
80x63	80	63	100	80	9	M12	-	37	18	5	3	12	35	60	560
100x80	100	80	125	100	9	M12	50	36	20	6	4	12	44	95	1120
125x100	125	100	160	125	11	M16	63	36	25	6	4	16	55	150	2240
160x125	160	125	200	160	11	M16	80	44	32	8	6	16	68	240	4400
200x160	200	160	250	200	13	M20	100	44	40	8	6	18	38	375	8800

KN - PARE-CHOCS



	L1	L2	B1	B2	H	Lv
KN-1	148	100	98	98	20	4
KN-2	208	160	98	98	20	4
KN-3	600	550	105	95	20	4

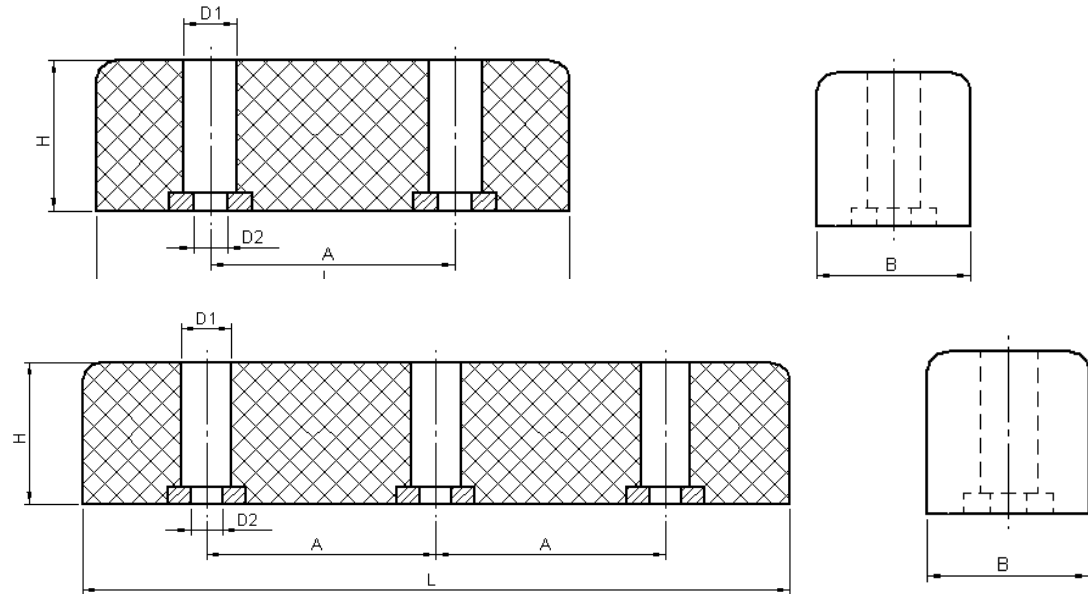
Pièce à percer, nous consulter pour un perçage réalisé en usine.



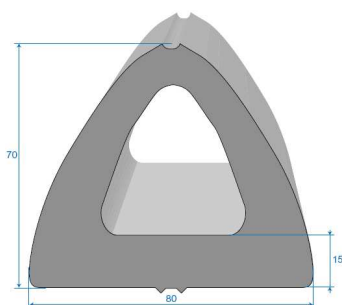
PROFILS BUTOIR EPDM (rouleau 20 mètres)

- 482 – Noir adhésivé
- 398 – Noir non adhésivé
- 610 – Blanc non adhésivé
- 611 – Gris non adhésivé

TAB - BUTOIRS VEHICULES INDUSTRIELS

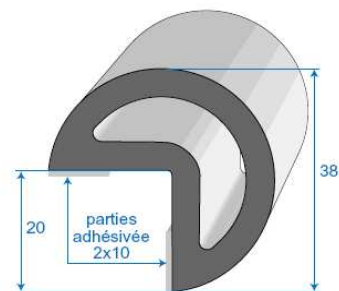


Type	H	L	B	Nb de perçages	A	D1	D2
TAB-1	15	125	40	2	60	19,7	8
TAB-2	40	125	40	2	60	19,8	8
TAB-3	50	125	43	2	60	20,3	8
TAB-4	70	125	43	2	60	19,8	8
TAB-5	60	200	52	2	120	26	10,5
TAB-6	80	200	52	2	120	26	10,5
TAB-7	60	300	52	3	115	26	10,5
TAB-8	80	300	52	3	115	26	10,5
TAB-9	60	400	52	3	165	26	10,5
TAB-10	80	400	52	3	165	26	10,5
TAB-11	35	315	60	3	157	26	12,5

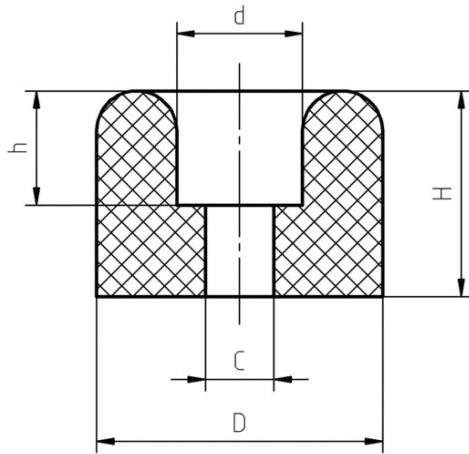


Profil butoir EPDM noir (gris ou blanc en option)				
Ref	H	h	l	Longueur
397	52	10	60	5 mètres
396	70	15	80	5 mètres
573	95	20	110	5 mètres

Profil antichoc pour angles EPDM noir (gris ou blanc en option)			
Ref	H	h	Longueur
520	38	20	20 mètres
535	65	35	4 mètres

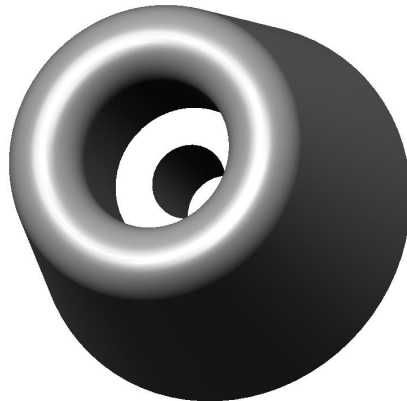
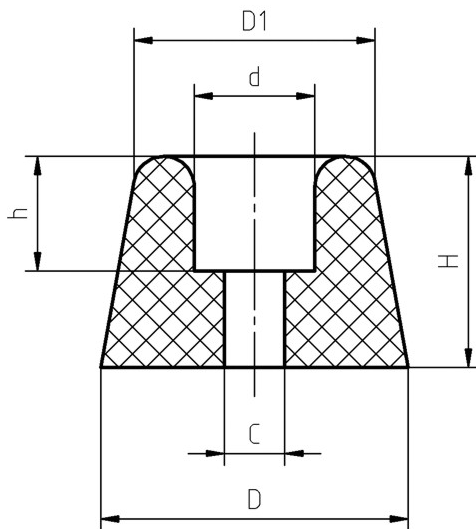


DBH - BUTEES DE PORTE



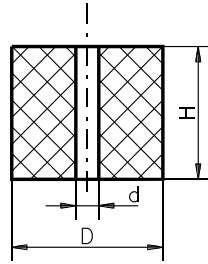
D/H	D	H	C	d	h
26/29	26	29	5	10	4
28/25	28	25	6	14	15
30/32	30	32	6	13	20
40/25	40	25	6	18	15
40/25	40	25	7	20	8
40/31	40	31	6	18	21
40/35	40	35	7	20	8
40/46	40	46	6	16	32

DBF - BUTEES DE PORTE



D/H	D	H	D1	C	d	h
20/10	20	10	16	5	8	6
25/10	25	10	20	4,5	7	6

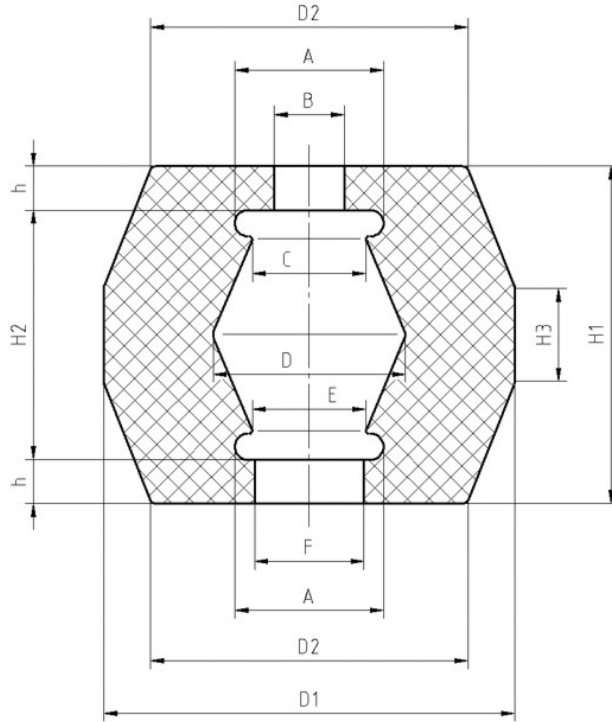
GP - TAMPONS CAOUTCHOUC CREUX



D/d-H	D	d	H
8/3-3	8,5	3,2	3,5
13/6,5-12	13	6,5	12
17,5/9-16	17,5	9	16
19/13-19	19	13	19
20/8,5-15	20	8,5	15
25/8-25	25	8,5	25
25/10,5-15	25	10,5	0,25
25/10,5-25	25	10,5	15
28/10,5-50	28	10,5	50
28/8-16	28	8	16
30/16-40	30	16	40
32/13-32	32	13,5	32
40/0,9-30	40	0,9	30
40/12-25	40	12	25
40/12-35	40	12	35
40/12-65	40	12	65
40/13-30	40	13	30
40/13,5-32	40	13,5	32
40/13-40	40	13,5	40
40/13-50	40	13,5	50
40/13,5-40	40	13,5	40
40/17-30	40	17	30
47/20-50	47	20	50
48/17-100	48	17	100
50/17-25	50	17	25
50/17-40	50	17	40
50/10-45	50	10	45
50/14-80	50	14	80
50/17-32	50	17	32
50/17-50	50	17	50
50/17-63	50	17	63
50/17-80	50	17	80
58/17-100	58	17	100
50/20-38	50	20	38
50/24-50	50	24	50

D/d-H	D	d	H
50/24,8-50	50	24,8	50
53/32,5-100	53	32,5	100
60/20-40	60	20	40
70/40-40	70	40	40
75/18-40	75	18	40
80/15-50	80	15	50
80/20-27	80	20	27
80/20-40	80	20	40
80/21-30	80	21	30
80/25-40	80	25	40
80/25-82	80	25	82
80/30-35	80	30	35
80/40-30	80	40	30
80/21-100	80	21	100
90/30-45	90	30	45
100/21-40	100	21	40
100/25-40	100	25	40
100/25-70	100	25	70
100/26-40	100	26	40
100/30-35	100	30	35
100/33-40	100	33	40
100/33-75	100	33	75
100/40-70	100	40	70
100/70-40	100	70	40
120/25-40	120	25	40
120/40-40	120	40	40
120/50-40	120	50	40
125/35-125	125	35	125
125/50-125	125	50	125
150/51-100	150	51	100
150/45-180	150	45	180
160/33-160	160	33	160
200/61-100	200	61	100
200/33-200	200	33	200
250/60-200	250	60	200

GF – RESSORTS CAOUTCHOUC



Le + produit : grande déformation axiale

Type	D1	H1	D2	A	B	C	D	E	F	H2	H3	h
55/55	55	55	42	22	14	15	24	15	14	35	15	10
56/90	90	56	75	32	14		36		24	40	24	8
90/108	108	90	82	38	19	29	50	29	29	66	26	12
140/125	125	140	115	50	24	40	55	40	39	104	40	18
150/155	155	150	135	50	24	40	60	40	39	114	50	118
150/188	188	150	155	60	29	58	70	48	39	112	50	20
180/188	188	180	167	60	29	48	70	48	39	142	60	20

