
















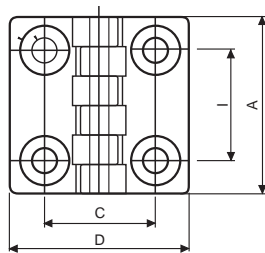
Eckotech **Charnières**

Page		Page	
87		91	
87		91	
87		91	
87			
88			
88			
88			
88			
89			
89			
90			
90			

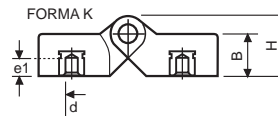
4754K CHARNIÈRE PLAINE K, INSERTS TARAUDÉS



Inserts taraudés en laiton.
PA: Polyamide.
Cheville en acier zingué.



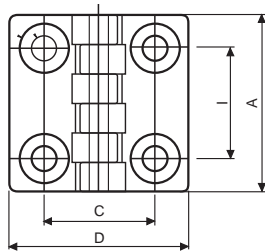
Référence	A	D	I	C	H	B	d	e1	Couleur
475404301	48	48	30	30	15.5	10.5	M5	7	Noir
475406301	64	64	40	40	19	13	M6	9	Noir
475409301	95	95	60	63	28.5	19	M8	13	Noir



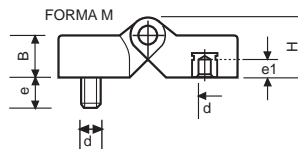
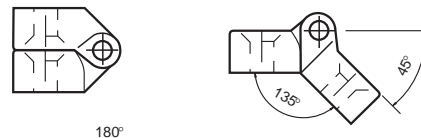
4754M CHARNIÈRE PLAINE M, INSERTS TARAUDÉS ET TIGES FILETÉES



Tiges en acier traité et inserts en laiton.
PA: Polyamide.
Cheville en acier zingué.



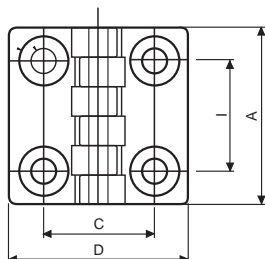
Référence	A	D	I	C	H	B	d	e	e1	Couleur
475404701	48	48	30	30	15.5	10.5	M5	15	7	Noir
475406701	64	64	40	40	19	13	M6	20	9	Noir
475409701	95	95	60	63	28.5	19	M8	20	13	Noir



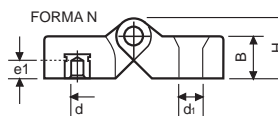
4754N CHARNIÈRE PLAINE N, TROUS PASSANTS ET INSERTS TARAUDÉS



Inserts taraudés en laiton et trous passants.
PA: Polyamide.
Cheville en acier zingué.



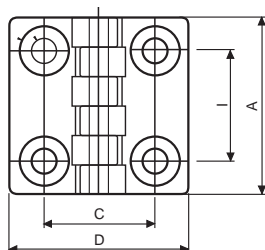
Référence	A	D	I	C	H	B	d	d1	e1	Couleur
475404401	48	48	30	30	15.5	10.5	M5	6.5	7	Noir
475406401	64	64	40	40	19	13	M6	6.5	9	Noir



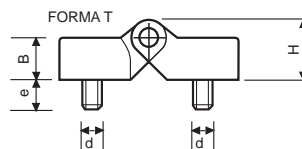
4754T CHARNIÈRE PLAINE T, TIGES FILETÉES



Tiges filetées en acier traité.
PA: Polyamide.
Cheville en acier zingué.



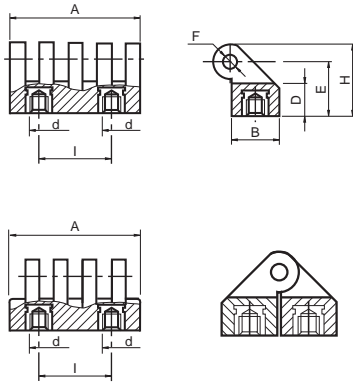
Référence	A	D	I	C	H	B	d	e	Couleur
475404501	48	48	30	30	15.5	10.5	M5	15	Noir
475406501	64	64	40	40	19	13	M6	20	Noir
475409501	95	95	60	63	28.5	19	M8	20	Noir



4755K CHARNIÈRE HK, INSERTS TARAUDÉS



Inserts taraudés en laiton.
PA: Polyamide.
Cheville en acier zingué.
Rotation complète 180°.

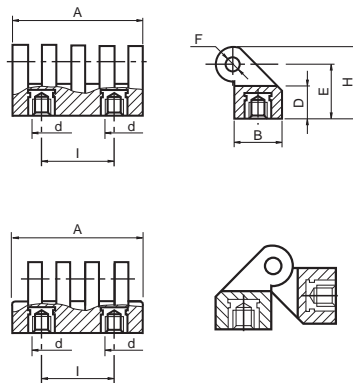


Référence	A	D	I	d	E	B	H	F	Couleur
475503551	30	11	15	M5	19	17	25	4	Noir
475505351	54	13	30	M6	22	20	29	5	Noir
475507351	78	16	42	M8	31	30	42	8	Noir

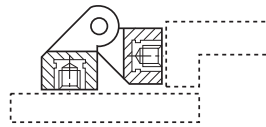
4755K* CHARNIÈRE HK*, INSERTS TARAUDÉS



Inserts taraudés en laiton.
PA: Polyamide.
Cheville en acier zingué.
Rotation complète 180°.



Référence	A	D	I	d	E	B	H	F	Couleur
475503553	30	11	15	M5	19	17	25	4	Noir
475505353	54	13	30	M6	22	20	29	5	Noir
475507353	78	16	42	M8	31	30	42	8	Noir

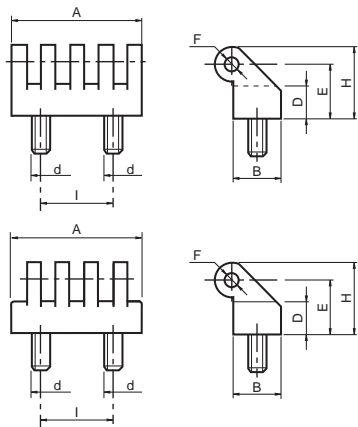


EXEMPLE DE MONTAGE

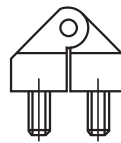
4755T CHARNIÈRE HT, TIGES FILETÉES



Tiges filetées en acier traité.
PA: Polyamide.
Cheville en acier zingué.
Rotation complète 180°.



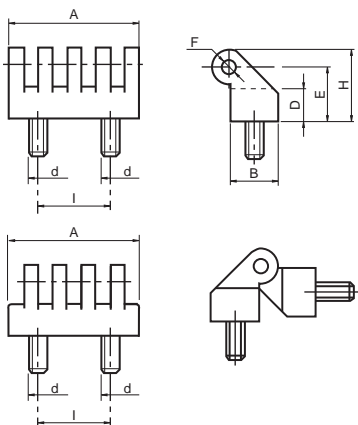
Référence	A	D	I	d	E	B	H	F	Couleur
475503552	30	11	15	M5	19	17	25	4	Noir
475505352	54	13	30	M6	22	20	29	5	Noir
475507352	78	16	42	M8	31	30	42	8	Noir



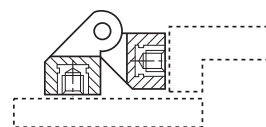
4755T* CHARNIÈRE HT*, TIGES FILETÉES



Tiges filetées en acier traité.
PA: Polyamide.
Cheville en acier zingué.
Rotation complète 180°.

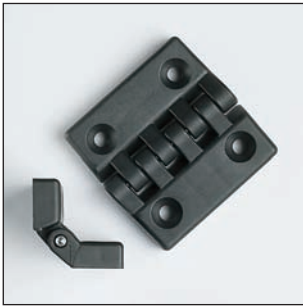


Référence	A	D	I	d	E	B	H	F	Couleur
475503554	30	11	15	M5	19	17	25	4	Noir
475505354	54	13	30	M6	22	20	29	5	Noir
475507354	78	16	42	M8	31	30	42	8	Noir

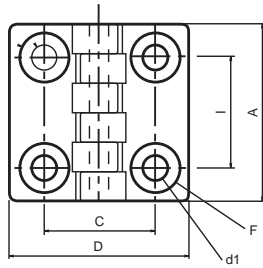


EXEMPLE DE MONTAGE

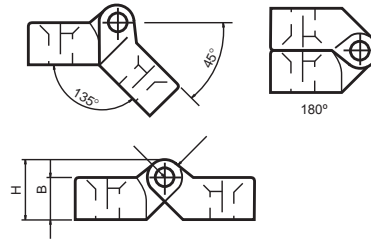
4756 CHARNIÈRE, TROUS PASSANTS



PA: Polyamide.
Cheville en acier zingué.



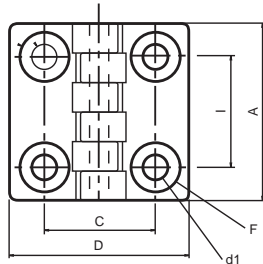
Référence	A	D	I	C	d1	B	H	F	Couleur
475603050	32	32	20	20	4.5	7	10.5	8	Noir
475604055	48	48	30	30	6.5	10.5	15.5	13	Noir
475606056	64	64	40	40	6.5	13	19	13	Noir
475609050	96	96	60	63	8.5	16	24	16	Noir
475610050	96	96	60	63	10.5	16	24	20	Noir



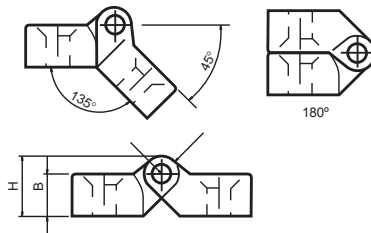
4756 CHARNIÈRE, TROUS PASSANTS, CHEVILLE EN INOX



PA: Polyamide.
Cheville en acier inoxydable.



Référence	A	D	I	C	d1	B	H	F	Couleur
475603150	32	32	20	20	4.5	7	10.5	8	Noir
475604150	48	48	30	30	6.5	10.5	15.5	13	Noir
475606150	64	64	40	40	6.5	13	19	13	Noir
475609150	96	96	60	63	8.5	16	24	16	Noir
475610150	96	96	60	63	10.5	16	24	20	Noir

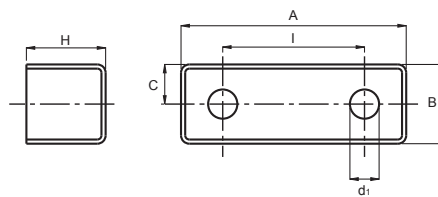


INOX
Stainless
Steel

4757 COMPLEMENT POUR CHARNIÈRE AVEC TROUS PASSANT



PA: Polyamide.



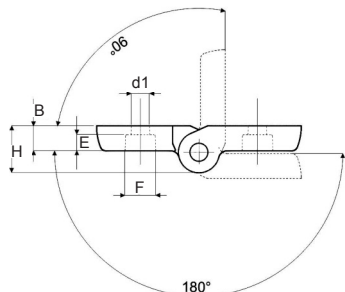
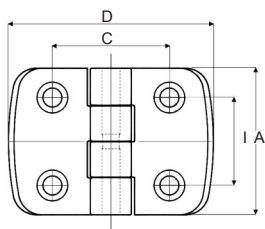
Référence	A	I	C	d1	B	H	Couleur
475741030	48	30	8	8	22	15.5	Noir
475741140	65	40	11	8	22	22.5	Noir

4246 CHARNIÈRE 233 TROUS PASSANTS, CHEVILLE EN INOX



PA: Polyamide renforcé.
Cheville en acier inoxydable.
Rotation max. 270°.

INOX
Stainless
Steel



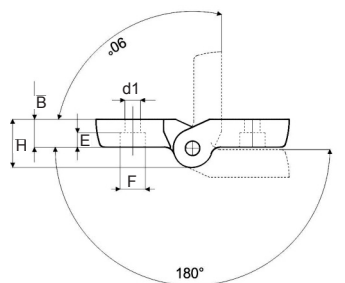
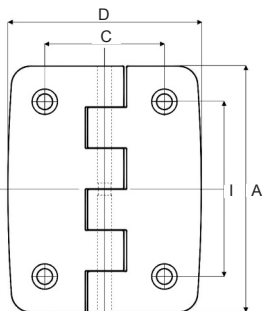
Référence	A	D	I	C	d1	F	B	E	H	Couleur
424680970	50	50	34	34	5,5	10,5	8,5	3,5	16	Noir
424680772	50	50	30	31	5,5	9	8,5	5	16	Noir
424680773	50	70	30	40	6,5	10,5	8,5	6	16	Noir
424680774	50	70	30	46	6,5	10,5	8,5	6	16	Noir
424680775	50	70	30	46	8,5	13,5	8,5	5	16	Noir

4247 CHARNIÈRE 234 TROUS PASSANTS, CHEVILLE EN INOX



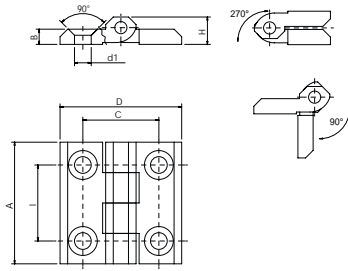
PA: Polyamide renforcé.
Cheville en acier inoxydable.
Rotation max. 270°.

INOX
Stainless
Steel



Référence	A	D	I	C	d1	F	B	E	H	Couleur
424780776	102	80	72,5	49,5	6,5	10,5	11,5	6	20	Noir
424780777	102	80	72,5	49,5	8,5	13,5	11,5	8	20	Noir

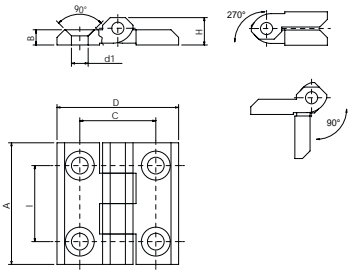
4756 BK CHARNIÈRE METALLIQUE TROUS PASSANTS, NOIR



Référence	A	D	I	C	d1	B	H	Couleur
475604910	40	40	25	25	5,5	5	9	Noir
475605910	50	50	30	30	6,5	6	11,5	Noir
475606910	60	60	36	36	6,5	6	11,5	Noir
475607910	64	64	40	40	6,5	6	11,5	Noir

Alliage léger noir (Zinc Die Cast).
Cheville en acier inoxydable AISI 303.

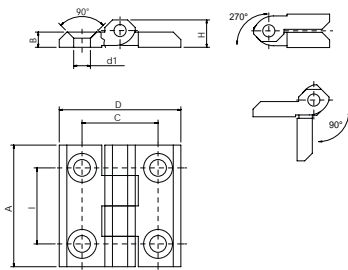
4756 CR CHARNIÈRE METALLIQUE TROUS PASSANTS, CHROME



Référence	A	D	I	C	d1	B	H	Couleur
475604920	40	40	25	25	5,5	5	9	Chrome
475605920	50	50	30	30	6,5	6	11,5	Chrome
475606920	60	60	36	36	6,5	6	11,5	Chrome

Alliage léger chrome (Zinc Die Cast).
Cheville en acier inoxydable AISI 303.

4756 INOX CHARNIÈRE EN ACIER INOXYDABLE TROUS PASSANTS



Référence	A	D	I	C	d1	B	H	Couleur
475604930	40	40	25	25	5,5	5	9	Naturel
475605930	50	50	30	30	6,5	6	11,5	Naturel
475606930	60	60	36	36	6,5	6	11,5	Naturel

Acier inoxydable AISI 316.
Cheville en acier inoxydable AISI 303.

