

Autres dimensions ou filetages : nous consulter !

Matériaux standards : caoutchouc naturel NR / acier zingué ST37.

Sur demande : caoutchoucs SBR, NBR, EPDM ou CR (néoprène), aciers inox 304 ou 316, duretés de 20 à 90 Sh.

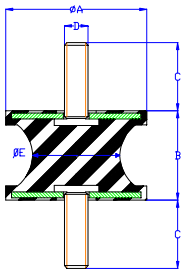


Fig. 1

REFERENCIA RÉFÉRENCE REFERENCE ART. NR.	Fig	Dureza Dureté Hardness Härte Shöre	DIMENSIONES (mm) DIMENSIONS (mm) DIMENSIONS (mm) ABMESSUNGEN (mm)					COMPRESION COMPRESSION COMPRESSION DRUCKBELASTUNG		CIZALLA CISAILLEMENT SHEAR SCHUBBELASTUNG	
T			Ø A	B	Ø E	D	C	Carga Charge Load Last (Kg)	Flecha Flèche Deflection Federweg (mm)	Carga Charge Load Last (Kg)	Flecha Flèche Deflection Federweg (mm)
3376	1	60	030	25	24	M-08	20	60	5,0±1,0	8,0	5,0±1,0
3230	1	60	060	36	37	M-10	30	250	7,0±1,0	40,0	7,0±1,0
3231	1	60	060	43	38	M-10	30	250	9,0±1,0	30,0	9,0±1,0

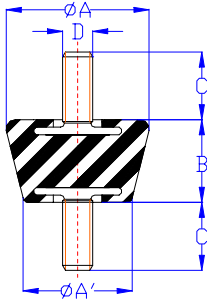


Fig. 2

REFERENCIA RÉFÉRENCE REFERENCE ART. NR.	Fig	Dureza Dureté Hardness Härte Shöre	DIMENSIONES (mm) DIMENSIONS (mm) DIMENSIONS (mm) ABMESSUNGEN (mm)					COMPRESION COMPRESSION COMPRESSION DRUCKBELASTUNG		CIZALLA CISAILLEMENT SHEAR SCHUBBELASTUNG	
A			Ø A	Ø A'	B	D	C	Carga Charge Load Last (Kg)	Flecha Flèche Deflection Federweg (mm)	Carga Charge Load Last (Kg)	Flecha Flèche Deflection Federweg (mm)
A25	2	60	032	022	19	M-06	15	40	4,0±0,5	8,0	4,0±0,5
A35B	2	40	038	028	22	M-08	20	50	5,0±0,5	10,0	5,0±0,5
A35	2	60	038	028	22	M-08	20	100	5,0±0,5	20,0	5,0±0,5
A45B	2	45	045	032	30	M-08	20	65	6,0±1,0	9,0	6,0±1,0
A45	2	60	045	032	30	M-08	20	115	6,0±1,0	15,0	6,0±1,0
Pack A35B	*	40						50	5,0±0,5	10,0	5,0±0,5
Pack A35	*	60						100	5,0±0,5	20,0	5,0±0,5
Pack A45B	*	45						65	6,0±1,0	9,0	6,0±1,0
Pack A45	*	60						115	6,0±1,0	15,0	6,0±1,0

*BOLSA con 4 A35B o A35 o A45B o A45 + 8 Arandelas + 8 Tuercas M8

*SAC contenant 4 A35B ou A35 ou A45B ou A45 + 8 Rondelles + 8 Vis M8

*PACK with 4 A35B or A35 or A45B or A45 + 8 Washer + 8 M8 Locknut

*SET bestehend aus 4 A35 od. A35B od. A45B od. A45 + 8 Muttern + 8 Unterlegscheiben

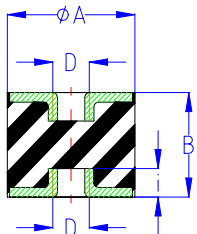


Fig. 4

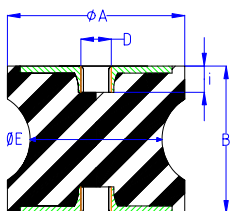


Fig. 5

REFERENCIA RÉFÉRENCE REFERENCE ART. NR.	Fig	Dureza Dureté Hardness Härte Shöre	DIMENSIONES (mm) DIMENSIONS (mm) DIMENSIONS (mm) ABMESSUNGEN (mm)					COMPRESION COMPRESSION COMPRESSION DRUCKBELASTUNG		CIZALLA CISAILLEMENT SHEAR SCHUBBELASTUNG	
H			Ø A	B	Ø E	D	I	Carga Charge Load Last (Kg)	Flecha Flèche Deflection Federweg (mm)	Carga Charge Load Last (Kg)	Flecha Flèche Deflection Federweg (mm)
3330	4	60	030	30		M-08	6	80	6,0±1,0	16,0	6,0±1,0
3430	4	60	040	30		M-08	6	200	6,0±1,0	40,0	6,0±1,0
3617	5	60	070	58	52	M-12	11	350	11,0±1,0	70,0	11,0±1,0
3356	5	60	080	65	70	M-12	11	600	13,0±1,5	120,0	13,0±1,5
3866	5	60	090	80	79	M-12	12	750	16,0±2,0	130,0	16,0±1,5
3866RED	5	60	090	50	82	M-12	12	850	10,0±1,0	170,0	10,0±1,0
3867	5	60	105	85	91	M-14	13	1.200	17,0±2,0	240,0	17,0±2,0
HR102D60	5	60	102	55	94	M-16	15	1.000	11,0±1,5	200,0	11,0±1,5
3868	5	60	130	95	117	M-16	15	1.800	19,0±2,0	320,0	19,0±2,0

Autres dimensions ou filetages : nous consulter !

Matériaux standards : caoutchouc naturel NR / acier zingué ST37.

Sur demande : caoutchoucs SBR, NBR, EPDM ou CR (néoprène), aciers inox 304 ou 316, durtés de 20 à 90 Sh.

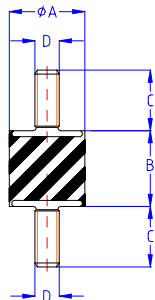


Fig. 1

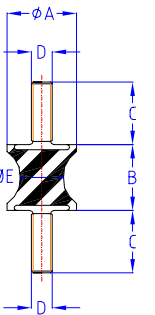


Fig. 2

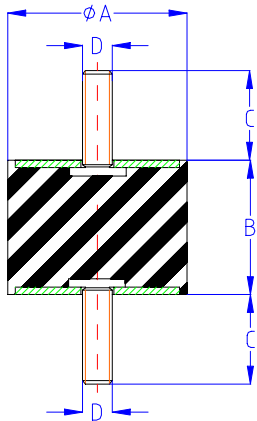


Fig. 3

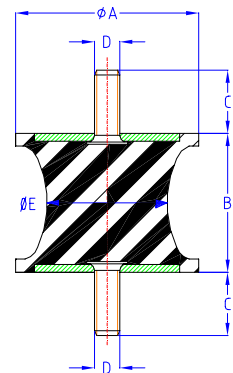


Fig. 4

REFERENCIA RÉFÉRENCE REFERENCE ART. NR.	Fig	Dureza Durté Hardness Härte	DIMENSIONES (mm) DIMENSIONS (mm) DIMENSIONS (mm) ABMESSUNGEN (mm)					COMPRESION COMPRESSION COMPRESSION DRUCKBELASTUNG		CIZALLA CISAILLEMENT SHEAR SCHUBBELASTUNG	
SR		Shöre	Ø A	B	Ø E	D	C	Carga Charge Load Last (Kg)	Flecha Flèche Deflection Federweg (mm)	Carga Charge Load Last (Kg)	Flecha Flèche Deflection Federweg (mm)
SR 000	1	60	012	15		M-05	10	15	3,0±0,5	1,5	2,0±0,5
SR 1610	1	60	016	10		M-05	12	20	1,5±0,5	2,0	2,0±0,5
SR 1615	1	60	016	15		M-05	12	15	2,5±0,5	2,0	3,0±0,5
SR 1620	1	60	016	20		M-05	12	15	3,5±0,5	2,0	4,0±0,5
SR 1625	1	60	016	25		M-05	12	15	4,5±1,0	2,0	5,0±1,0
SR 2008	1	60	020	08		M-06	15	45	1,0±0,3	4,5	1,5±0,3
SR 2015	1	60	020	15		M-06	15	35	3,0±0,5	3,5	3,0±0,5
SR 00-N	2	60	020	19	12	M-06	15	12	4,0±1,0	2,0	4,0±0,5
SR 2020	1	60	020	20		M-06	15	25	4,0±1,0	2,5	4,0±0,5
SR 2025	1	60	020	25		M-06	15	25	5,0±1,0	2,5	5,0±1,0
SR 2030	1	60	020	30		M-06	15	25	6,0±1,0	2,5	6,0±1,0
SR 2510	1	50	025	10		M-08	20	80	2,0±0,5	8,0	2,0±0,5
SR 2515	1	50	025	15		M-08	20	60	3,0±0,5	8,0	3,0±0,5
SR 2520	1	50	025	20		M-08	20	45	4,0±0,5	8,0	4,0±0,5
SR 2525	1	50	025	25		M-08	20	40	5,0±1,0	6,0	5,0±1,0
SR 2530	1	50	025	30		M-08	20	40	6,0±1,0	5,0	6,0±1,0
SR 2540	1	50	025	40		M-08	20	40	8,0±1,0	5,0	8,0±1,0
SR 3010	1	50	030	10		M-08	20	80	2,0±0,5	11,0	2,0±0,5
SR 3015	1	50	030	15		M-08	20	80	3,0±0,5	11,0	3,0±0,5
SR 00	1	50	028	22		M-08	20	60	5,0±1,0	11,0	5,0±1,0
SR 3020	1	50	030	20		M-08	20	80	4,0±0,5	11,0	4,0±0,5
SR 3030	1	50	030	30		M-08	20	60	6,0±1,0	11,0	6,0±1,0
SR 3040	1	50	030	40		M-08	20	60	8,0±1,0	11,0	8,0±1,0
SR 4020	3	50	040	20		M-10	25	160	4,0±0,5	20,0	4,0±0,5
SR 0-N M8	4	50	040	28	20	M-08	30	40	5,5±1,0	7,0	5,5±1,0
SR 0-N	4	50	040	28	20	M-10	25	40	5,5±1,0	7,0	5,5±1,0
SR 0 M8	3	50	040	28		M-08	30	100	5,5±1,0	16,0	5,5±1,0
SR 4028	3	50	040	28		M-10	25	100	5,5±1,0	16,0	5,5±1,0
SR 4035	3	50	040	35		M-10	25	100	7,0±1,0	16,0	7,0±1,0
SR 4040	3	50	040	40		M-10	25	100	8,0±1,0	16,0	8,0±1,0
SR 4045	3	50	040	45		M-10	25	100	9,0±1,0	16,0	9,0±1,0
SR 5020	3	50	050	20		M-10	25	300	4,0±0,5	25,0	4,0±0,5
SR 5025	3	50	050	25		M-10	25	175	5,0±1,0	25,0	5,0±1,0
SR 5030	3	50	050	30		M-10	25	160	6,0±1,0	25,0	6,0±1,0
SR 5035	3	50	050	35		M-10	25	160	7,0±1,0	25,0	7,0±1,0
SR 5040	3	50	050	40		M-10	25	155	8,0±1,0	25,0	8,0±1,0
SR 5045	3	50	050	45		M-10	25	150	9,0±1,0	25,0	9,0±1,0
SR 5060	3	50	050	60		M-10	25	130	12,0±1,5	25,0	12,0±1,5
SR 1-N	4	50	057	44	24	M-08	25	70	8,5±1,0	10,0	8,5±1,0
SR 2-N	4	50	057	44	38	M-08	25	130	8,5±1,0	25,0	8,5±1,0
SR 6025	3	50	060	25		M-10	25	400	5,0±1,0	35,0	5,0±1,0
SR 6035	3	50	060	35		M-10	25	300	7,0±1,0	35,0	7,0±1,0
SR 6045	3	50	060	45		M-10	25	250	9,0±1,0	35,0	9,0±1,0
SR 4-N	4	50	060	60	48	M-10	25	150	10,0±1,0	20,0	12,0±1,5
SR 6060	3	50	060	60		M-10	25	225	12,0±1,5	35,0	12,0±1,5
SR 7035 M10	3	50	070	35		M-10	25	450	7,0±1,0	55,0	7,0±1,0
SR 7050 M10	3	50	070	50		M-10	25	300	10,0±1,0	35,0	10,0±1,0
SR 7070 M10	3	50	070	70		M-10	25	300	14,0±1,5	35,0	14,0±1,5
SR 7035	3	50	070	35		M-12	35	450	7,0±1,0	55,0	7,0±1,0
SR 7050	3	50	070	50		M-12	35	300	10,0±1,0	35,0	10,0±1,0
SR 7070	3	50	070	70		M-12	35	300	14,0±1,5	35,0	14,0±1,5
SR 8030	3	50	080	30		M-14	35	950	6,0±1,0	100,0	6,0±1,0
SR 8040	3	50	080	40		M-14	35	600	8,0±1,0	80,0	8,0±1,0
SR 8055	3	50	080	55		M-14	35	500	11,0±1,5	70,0	11,0±1,5
SR 5-N	4	50	080	70	68	M-14	35	350	14,0±1,5	65,0	14,0±1,5
SR 9540	3	50	095	40		M-16	42	1.000	8,0±1,0	140,0	8,0±1,0
SR 6-N	4	50	095	76	76	M-16	42	450	15,0±2,0	75,0	15,0±2,0
SR 7-N	4	50	108	75	97	M-16	45	600	15,0±2,0	140,0	15,0±2,0
SR 8-N	4	50	130	85	117	M-16	45	900	17,0±2,0	185,0	17,0±2,0
SR 15075	3	50	150	75		M-20	50	1.800	15,0±2,0	275,0	15,0±2,0

Autres dimensions ou filetages : nous consulter !

Matériaux standards : caoutchouc naturel NR / acier zingué ST37.

Sur demande : caoutchoucs SBR, NBR, EPDM ou CR (néoprène), aciers inox 304 ou 316, duretés de 20 à 90 Sh.

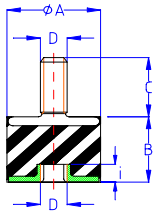


Fig. 1

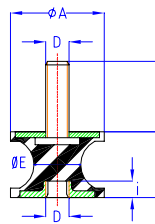


Fig. 2

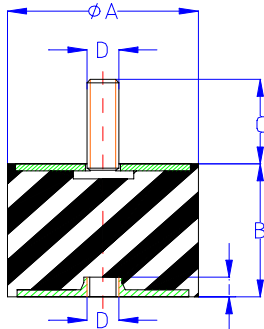


Fig. 3

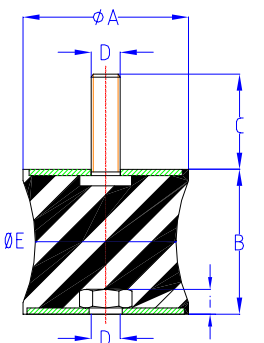


Fig. 4

REFERENCIA RÉFÉRENCE REFERENCE ART. NR.	Fig	Dureza Dureté Hardness Härte	DIMENSIONES (mm) DIMENSIONS (mm) DIMENSIONS (mm) ABMESSUNGEN (mm)						COMPRESSION COMPRESSION COMPRESSION DRUCKBELASTUNG		CIZALLA CISAILLEMENT SHEAR SCHUBBELASTUNG	
			Shöre	Ø A	B	Ø E	D	C	i	Carga Charge Load Last (Kg)	Flecha Flèche Deflection Federweg (mm)	Carga Charge Load Last (Kg)
MR												
MR 1610	1	60	016	10		M-05	12	5	20	1,5±0,5	2,0	2,0±0,5
MR 1615	1	60	016	15		M-05	12	5	15	2,5±0,5	2,0	3,0±0,5
MR 1620	1	60	016	20		M-05	12	5	15	3,5±1,0	2,0	4,0±0,5
MR 1625	1	60	016	25		M-05	12	5	15	4,5±1,0	2,0	5,0±0,5
MR 2015	1	60	020	15		M-06	15	5	35	3,0±0,5	3,5	3,0±0,5
MR 2020	1	60	020	20		M-06	15	5	30	4,0±1,0	2,5	4,0±0,5
MR 2025	1	60	020	25		M-06	15	5	25	5,0±1,0	2,5	5,0±1,0
MR 2030	1	60	020	30		M-06	15	5	25	6,0±1,0	2,5	6,0±1,0
MR 2520	1	50	025	20		M-08	20	6	50	4,0±0,5	8,0	4,0±0,5
MR 2525	1	50	025	25		M-08	20	6	45	5,0±1,0	6,0	5,0±1,0
MR 2530	1	50	025	30		M-08	20	6	40	6,0±1,0	5,0	6,0±1,0
MR 2540	1	50	025	40		M-08	20	6	40	8,0±1,0	5,0	8,0±1,0
MR 3015	1	50	030	15		M-08	20	6	90	3,0±0,5	11,0	3,0±0,5
MR 00	1	50	028	22		M-08	20	6	60	5,0±1,0	11,0	5,0±1,0
MR 3020	1	50	030	20		M-08	20	6	80	4,0±0,5	11,0	4,0±0,5
MR 3030	1	50	030	30		M-08	20	6	60	6,0±1,0	11,0	6,0±1,0
MR 3040	1	50	030	40		M-08	20	6	60	8,0±1,0	11,0	8,0±1,0
MR 4020	3	50	040	20		M-10	25	7	175	4,0±0,5	20,0	4,0±0,5
MR 0-N M8	2	50	040	28	20	M-08	30	6	40	5,5±1,0	7,0	5,5±1,0
MR 0-N	2	50	040	28	20	M-10	25	7	40	5,5±1,0	7,0	5,5±1,0
MR 0 M8	3	50	040	28		M-08	30	6	125	5,5±1,0	16,0	5,5±1,0
MR 4028	3	50	040	28		M-10	25	7	125	5,5±1,0	16,0	5,5±1,0
MR 4035	3	50	040	35		M-10	25	7	100	7,0±1,0	16,0	7,0±1,0
MR 4040	3	50	040	40		M-10	25	7	100	8,0±1,0	16,0	8,0±1,0
MR 4045	3	50	040	45		M-10	25	7	100	9,0±1,0	16,0	9,0±1,0
MR 5020	3	50	050	20		M-10	25	7	300	4,0±0,5	25,0	4,0±0,5
MR 5025	3	50	050	25		M-10	25	7	175	5,0±1,0	25,0	5,0±1,0
MR 5030	3	50	050	30		M-10	25	7	160	6,0±1,0	25,0	6,0±1,0
MR 5035	3	50	050	35		M-10	25	7	160	7,0±1,0	25,0	7,0±1,0
MR 5040	3	50	050	40		M-10	25	7	155	8,0±1,0	25,0	8,0±1,0
MR 5045	3	50	050	45		M-10	25	7	150	9,0±1,0	25,0	9,0±1,0
MR 5060	3	50	050	60		M-10	25	7	130	12,0±1,5	25,0	12,0±1,5
MR 2-N	4	50	057	44	38	M-08	25	7	130	8,5±1,0	25,0	8,5±1,0
MR 6025	3	50	060	25		M-10	25	7	400	5,0±1,0	35,0	5,0±1,0
MR 6035	3	50	060	35		M-10	25	7	300	7,0±1,0	35,0	7,0±1,0
MR 6045	3	50	060	45		M-10	25	7	250	9,0±1,0	35,0	9,0±1,0
MR 4-N	4	50	060	60	48	M-10	25	7	150	10,0±1,0	20,0	10,0±1,0
MR 6060	3	50	060	60		M-10	25	7	225	12,0±1,5	35,0	12,0±1,5
MR 7035 M10	3	50	070	35		M-10	25	9	450	7,0±1,0	55,0	7,0±1,0
MR 7050 M10	3	50	070	50		M-10	25	9	300	10,0±1,0	35,0	10,0±1,0
MR 7070 M10	3	50	070	70		M-10	25	9	300	14,0±1,5	35,0	14,0±1,5
MR 7035	3	50	070	35		M-12	35	11	450	7,0±1,0	55,0	7,0±1,0
MR 7050	3	50	070	50		M-12	35	11	300	10,0±1,0	35,0	10,0±1,0
MR 7070	3	50	070	70		M-12	35	11	300	14,0±1,5	35,0	14,0±1,5
MR 8030	3	50	080	30		M-14	35	11	950	6,0±1,0	100,0	6,0±1,0
MR 8040	3	50	080	40		M-14	35	11	600	8,0±1,0	80,0	8,0±1,0
MR 8055	3	50	080	55		M-14	35	11	500	11,0±1,5	70,0	11,0±1,5
MR 5-N	4	50	080	70	68	M-14	35	11	350	14,0±1,5	65,0	14,0±1,5
MR 9540	3	50	095	40		M-16	42	15	1.000	8,0±1,0	140,0	8,0±1,0
MR 6-N	4	50	095	76	76	M-16	42	15	450	15,0±2,0	75,0	15,0±2,0
MR 7-N	4	50	108	75	97	M-16	45	15	600	15,0±2,0	140,0	15,0±2,0
MR 8-N	4	50	130	85	117	M-16	45	15	900	17,0±2,0	185,0	17,0±2,0
MR 15075	3	50	150	75		M-20	50	20	1.800	15,0±2,0	275,0	15,0±2,0

Autres dimensions ou filetages : nous consulter !

Matériaux standards : caoutchouc naturel NR / acier zingué ST37.

Sur demande : caoutchoucs SBR, NBR, EPDM ou CR (néoprène), aciers inox 304 ou 316, duretés de 20 à 90 Sh.

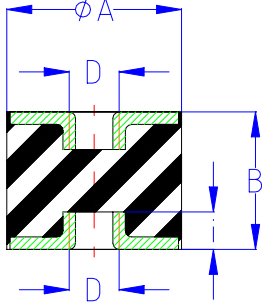


Fig. 1

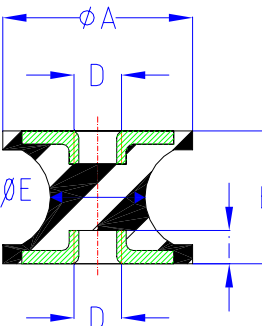


Fig. 2

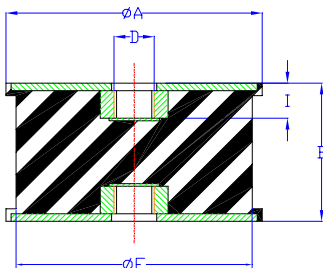


Fig. 3

REFERENCIA RÉFÉRENCE REFERENCE ART. NR.	Fig	Dureza Dureté Hardness Härte Shöre	DIMENSIONES (mm) DIMENSIONS (mm) DIMENSIONS (mm) ABMESSUNGEN (mm)					COMPRESION COMPRESSION COMPRESSION DRUCKBELASTUNG		CIZALLA CISAILLEMENT SHEAR SCHUBBELASTUNG	
HR		Shöre	Ø A	B	Ø E	D	i	Carga Charge Load Last (Kg)	Flecha Flèche Deflection Federweg (mm)	Carga Charge Load Last (Kg)	Flecha Flèche Deflection Federweg (mm)
HR 1615	1	60	016	15		M-05	5	15	2,5±0,5	2,0	2,0±0,5
HR 1620	1	60	016	20		M-05	5	15	3,5±0,5	2,0	4,0±0,5
HR 1625	1	60	016	25		M-05	5	15	4,5±1,0	2,0	5,0±1,0
HR 2015	1	60	020	15		M-06	5	40	2,0±0,5	3,5	3,0±0,5
HR 2020	1	60	020	20		M-06	5	30	4,0±1,0	2,5	4,0±0,5
HR 2025	1	60	020	25		M-06	5	30	5,0±1,0	2,5	5,0±1,0
HR 2030	1	60	020	30		M-06	5	25	6,0±1,0	2,5	6,0±1,0
HR 2520	1	50	025	20		M-08	6	50	4,0±0,5	8,0	4,0±0,5
HR 2525	1	50	025	25		M-08	6	45	5,0±1,0	6,0	5,0±1,0
HR 2530	1	50	025	30		M-08	6	40	6,0±1,0	5,0	6,0±1,0
HR 2540	1	50	025	40		M-08	6	40	8,0±1,0	5,0	8,0±1,0
HR 00	1	50	028	22		M-08	6	60	4,5±1,0	11,0	5,0±1,0
HR 3020	1	50	030	20		M-08	6	80	4,0±0,5	11,0	4,0±0,5
HR 3030	1	50	030	30		M-08	6	60	6,0±1,0	11,0	6,0±1,0
HR 3040	1	50	030	40		M-08	6	60	8,0±1,0	11,0	8,0±1,0
HR 4020	1	50	040	20		M-10	7	175	4,0±0,5	20,0	4,0±0,5
HR 0-N M8	2	50	040	28	20	M-08	6	40	5,5±1,0	7,0	5,5±1,0
HR 0-N	2	50	040	28	20	M-10	7	40	5,5±1,0	7,0	5,5±1,0
HR 0 M8	1	50	040	28		M-08	6	125	5,5±1,0	16,0	5,5±1,0
HR 4028	1	50	040	28		M-10	7	125	5,5±1,0	16,0	5,5±1,0
HR 4035	1	50	040	35		M-10	7	100	7,0±1,0	16,0	7,0±1,0
HR 4040	1	50	040	40		M-10	7	100	8,0±1,0	16,0	8,0±1,0
HR 4045	1	50	040	45		M-10	7	100	9,0±1,0	16,0	9,0±1,0
HR 5020	1	50	050	20		M-10	7	300	4,0±0,5	25,0	4,0±0,5
HR 5025	1	50	050	25		M-10	7	175	5,0±1,0	25,0	5,0±1,0
HR 5030	1	50	050	30		M-10	7	160	6,0±1,0	25,0	6,0±1,0
HR 5035	1	50	050	35		M-10	7	160	7,0±1,0	25,0	7,0±1,0
HR 5040	1	50	050	40		M-10	7	155	8,0±1,0	25,0	8,0±1,0
HR 5045	1	50	050	45		M-10	7	150	9,0±1,0	25,0	9,0±1,0
HR 5060	1	50	050	60		M-10	7	130	12,0±1,5	25,0	12,0±1,5
HR 2-N	2	50	057	44	38	M-08	7	130	8,5±1,0	25,0	8,5±1,0
HR 6025	1	50	060	25		M-10	7	400	5,0±1,0	35,0	5,0±1,0
HR 6035	1	50	060	35		M-10	7	300	7,0±1,0	35,0	7,0±1,0
HR 6045	1	50	060	45		M-10	7	250	9,0±1,0	35,0	9,0±1,0
HR 4-N	2	50	060	60	48	M-10	7	150	10,0±1,0	20,0	12,0±1,5
HR 6060	1	50	060	60		M-10	7	225	12,0±1,5	35,0	11,0±1,5
HR 7035 M10	1	50	070	35		M-10	9	450	7,0±1,0	55,0	7,0±1,0
HR 7050 M10	1	50	070	50		M-10	9	300	10,0±1,0	35,0	10,0±1,0
HR 7070 M10	1	50	070	70		M-10	9	300	14,0±1,5	35,0	14,0±1,5
HR 7035	1	50	070	35		M-12	11	450	7,0±1,0	55,0	7,0±1,0
HR 7050	1	50	070	50		M-12	11	300	10,0±1,0	35,0	10,0±1,0
HR 7070	1	50	070	70		M-12	11	300	14,0±1,5	35,0	14,0±1,5
HR 8030	1	50	080	30		M-14	11	950	6,0±1,0	100,0	6,0±1,0
HR 8040	1	50	080	40		M-14	11	600	8,0±1,0	80,0	8,0±1,0
HR 8055	1	50	080	55		M-14	11	500	11,0±1,5	70,0	11,0±1,5
HR 5-N	2	50	080	70	68	M-14	11	350	14,0±1,5	65,0	14,0±1,5
HR 9540	1	50	095	40		M-16	15	1.000	8,0±1,0	140,0	8,0±1,0
HR 6-N	2	50	095	76	76	M-16	15	450	15,0±2,0	75,0	15,0±2,0
HR102D45	3	45	102	55	94	M-16	15	500	11,0±1,5	100,0	11,0±1,5
HR102D60	3	60	102	55	94	M-16	15	1.000	11,0±1,5	200,0	11,0±1,5
HR102D75	3	75	102	55	94	M-16	15	2.500	11,0±1,5	350,0	11,0±1,5
HR 7-N	2	50	108	75	97	M-16	15	600	15,0±2,0	140,0	15,0±2,0
HR 8-N	2	50	130	85	117	M-16	15	900	17,0±2,0	185,0	17,0±2,0
HR 15075	1	50	150	75		M-20	20	1.800	15,0±2,0	275,0	15,0±2,0

Autres dimensions ou filetages : nous consulter !

Matériaux standards : caoutchouc naturel NR / acier zingué ST37.

Sur demande : caoutchoucs SBR, NBR, EPDM ou CR (néoprène), aciers inox 304 ou 316, duretés de 20 à 90 Sh.

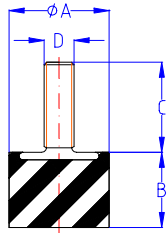


Fig. 1

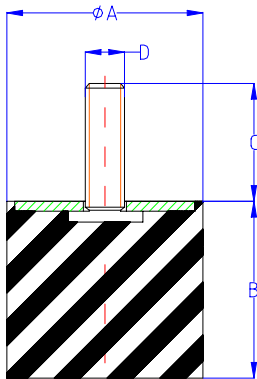


Fig. 2

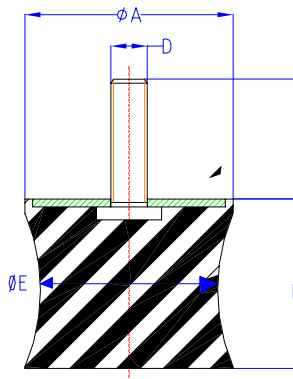


Fig. 3

REFERENCIA RÉFÉRENCE REFERENCE ART. NR.	Fig	Dureza Dureté Hardness Härte	DIMENSIONES (mm) DIMENSIONS (mm) DIMENSIONS (mm) ABMESSUNGEN (mm)					COMPRESION COMPRESSION COMPRESSION DRUCKBELASTUNG	
		Shöre	Ø A	B	Ø E	D	C	Carga Charge Load Last (Kg)	Flecha Flèche Deflection Federweg (mm)
R									
R 000	1	60	Ø12	13		M-05	10	15	3,0±0,5
R 1610	1	60	Ø16	10		M-05	12	20	1,5±0,5
R 1615	1	60	Ø16	15		M-05	12	15	2,5±0,5
R 1620	1	60	Ø16	20		M-05	12	15	3,5±0,5
R 1625	1	60	Ø16	25		M-05	12	15	4,5±1,0
R 2008	1	60	Ø20	Ø8		M-06	15	45	1,6±0,5
R 2015	1	60	Ø20	15		M-06	15	35	3,0±0,5
R 2020	1	60	Ø20	20		M-06	15	25	4,0±1,0
R 2025	1	60	Ø20	25		M-06	15	25	5,0±1,0
R 2030	1	60	Ø20	30		M-06	15	25	6,0±1,0
R 2510	1	50	Ø25	10		M-08	20	50	2,0±0,5
R 2515	1	50	Ø25	15		M-08	20	40	3,0±0,5
R 2520	1	50	Ø25	20		M-08	20	40	4,0±0,5
R 2525	1	50	Ø25	25		M-08	20	40	5,0±1,0
R 2530	1	50	Ø25	30		M-08	20	40	6,0±1,0
R 2540	1	50	Ø25	40		M-08	20	40	8,0±1,0
R 3010	1	50	Ø30	10		M-08	20	80	2,0±0,5
R 3015	1	50	Ø30	15		M-08	20	80	3,0±0,5
R 00	1	50	Ø28	22		M-08	20	60	5,0±1,0
R 3020	1	50	Ø30	20		M-08	20	80	4,0±0,5
R 3030	1	50	Ø30	30		M-08	20	60	6,0±1,0
R 3040	1	50	Ø30	40		M-08	20	60	8,0±1,0
R 4020	2	50	Ø40	20		M-10	25	140	4,0±0,5
R 4028	2	50	Ø40	28		M-10	25	100	5,5±1,0
R 4035	2	50	Ø40	35		M-10	25	100	7,0±1,0
R 4040	2	50	Ø40	40		M-10	25	100	8,0±1,0
R 4045	2	50	Ø40	45		M-10	25	90	9,0±1,0
R 5020	2	50	Ø50	20		M-10	25	300	4,0±0,5
R 5025	2	50	Ø50	25		M-10	25	175	5,0±1,0
R 5030	2	50	Ø50	30		M-10	25	160	6,0±1,0
R 5035	2	50	Ø50	35		M-10	25	160	7,0±1,0
R 5040	2	50	Ø50	40		M-10	25	155	8,0±1,0
R 5045	2	50	Ø50	45		M-10	25	150	9,0±1,0
R 5060	2	50	Ø50	60		M-10	25	130	12,0±1,5
R 6025	2	50	Ø60	25		M-10	25	400	5,0±1,0
R 6035	2	50	Ø60	35		M-10	25	300	7,0±1,0
R 6045	2	50	Ø60	45		M-10	25	250	9,0±1,0
R 4-N	3	50	Ø60	58	48	M-10	25	150	10,0±1,0
R 6060	2	50	Ø60	60		M-10	25	225	12,0±1,5
R 7035 M10	2	50	Ø70	35		M-10	25	450	7,0±1,0
R 7050 M10	2	50	Ø70	50		M-10	25	300	10,0±1,0
R 7070 M10	2	50	Ø70	70		M-10	25	300	14,0±1,5
R 7035	2	50	Ø70	35		M-12	35	450	7,0±1,0
R 7050	2	50	Ø70	50		M-12	35	300	10,0±1,0
R 7070	2	50	Ø70	70		M-12	35	300	14,0±1,5
R 8030	2	50	Ø80	30		M-14	35	950	6,0±1,0
R 8040	2	50	Ø80	40		M-14	35	600	8,0±1,0
R 8055	2	50	Ø80	55		M-14	35	500	11,0±1,5
R 5-N	3	50	Ø80	65	68	M-14	35	350	14,0±1,5
R 6-N	3	50	Ø95	74	76	M-16	42	450	15,0±2,0

Autres dimensions ou filetages : nous consulter !

Matériaux standards : caoutchouc naturel NR / acier zingué ST37.

Sur demande : caoutchoucs SBR, NBR, EPDM ou CR (néoprène), aciers inox 304 ou 316, duretés de 20 à 90 Sh.

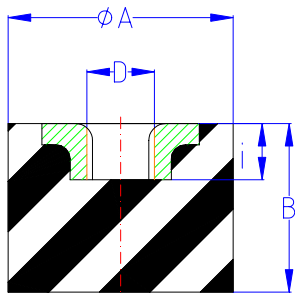


Fig. 1

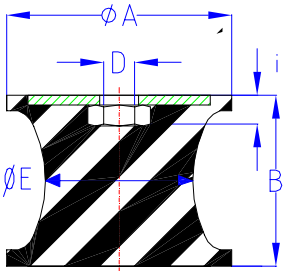


Fig. 2

REFERENCIA RÉFÉRENCE REFERENCE ART. NR.	Fig	Dureza Dureté Hardness Härte	DIMENSIONES (mm) DIMENSIONS (mm) DIMENSIONS (mm) ABMESSUNGEN (mm)					COMPRESION COMPRESSION COMPRESSION DRUCKBELASTUNG	
TH		Shöre	Ø A	B	Ø E	D	C	Carga Charge Load Last (Kg)	Flеча Flèche Deflection Federweg (mm)
TH 1610	1	60	016	10		M-05	5	20	1,5±0,5
TH 1615	1	60	016	15		M-05	5	15	2,5±0,5
TH 1620	1	60	016	20		M-05	5	15	3,5±0,5
TH 1625	1	60	016	25		M-05	5	15	4,5±1,0
TH 2008	1	60	020	08		M-06	5	45	1,6±0,5
TH 2015	1	60	020	15		M-06	5	35	3,0±0,5
TH 2020	1	60	020	20		M-06	5	25	4,0±1,0
TH 2025	1	60	020	25		M-06	5	25	5,0±1,0
TH 2030	1	60	020	30		M-06	5	25	6,0±1,0
TH 2510	1	50	025	10		M-08	6	50	2,0±0,5
TH 2515	1	50	025	15		M-08	6	40	3,0±0,5
TH 2520	1	50	025	20		M-08	6	40	4,0±0,5
TH 2525	1	50	025	25		M-08	6	40	5,0±1,0
TH 2530	1	50	025	30		M-08	6	40	6,0±1,0
TH 2540	1	50	025	40		M-08	6	40	8,0±1,0
TH 3010	1	50	030	10		M-08	6	80	2,0±0,5
TH 3015	1	50	030	15		M-08	6	80	3,0±0,5
TH 00	1	50	028	22		M-08	6	60	5,0±1,0
TH 3020	1	50	030	20		M-08	6	80	4,0±0,5
TH 3030	1	50	030	30		M-08	6	60	6,0±1,0
TH 3040	1	50	030	40		M-08	6	60	8,0±1,0
TH 4020	1	50	040	20		M-10	7	140	4,0±0,5
TH 4028	1	50	040	28		M-10	7	100	5,5±1,0
TH 4035	1	50	040	35		M-10	7	100	7,0±1,0
TH 4040	1	50	040	40		M-10	7	100	8,0±1,0
TH 4045	1	50	040	45		M-10	7	90	9,0±1,0
TH 5020	1	50	050	20		M-10	7	300	4,0±0,5
TH 5025	1	50	050	25		M-10	7	175	5,0±1,0
TH 5030	1	50	050	30		M-10	7	160	6,0±1,0
TH 5035	1	50	050	35		M-10	7	160	7,0±1,0
TH 5040	1	50	050	40		M-10	7	155	8,0±1,0
TH 5045	1	50	050	45		M-10	7	150	9,0±1,0
TH 5060	1	50	050	60		M-10	7	130	12,0±1,5
TH 6025	1	50	060	25		M-10	7	400	5,0±1,0
TH 6035	1	50	060	35		M-10	7	300	7,0±1,0
TH 6045	1	50	060	45		M-10	7	250	9,0±1,0
TH 4-N	2	50	060	58	48	M-10	7	150	10,0±1,0
TH 6060	1	50	060	60		M-10	7	225	12,0±1,5
TH 7035 M10	1	50	070	35		M-10	9	450	7,0±1,0
TH 7050 M10	1	50	070	50		M-10	9	300	10,0±1,0
TH 7070 M10	1	50	070	70		M-10	9	300	14,0±1,5
TH 7035	1	50	070	35		M-12	11	450	7,0±1,0
TH 7050	1	50	070	50		M-12	11	300	10,0±1,0
TH 7070	1	50	070	70		M-12	11	300	14,0±1,5
TH 8030	1	50	080	30		M-14	11	950	6,0±1,0
TH 8040	1	50	080	40		M-14	11	600	8,0±1,0
TH 8055	1	50	080	55		M-14	11	500	11,0±1,5
TH 5-N	2	50	080	65	68	M-14	11	350	14,0±1,5
TH 6-N	2	50	095	74	76	M-16	15	450	15,0±2,0

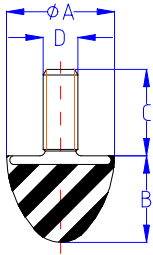


Fig. 1

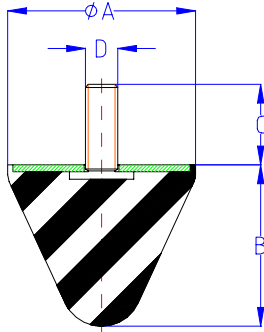


Fig. 2

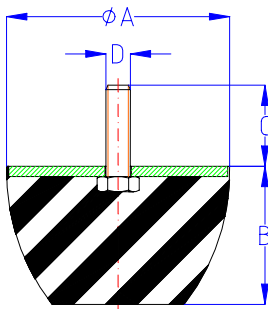


Fig. 3

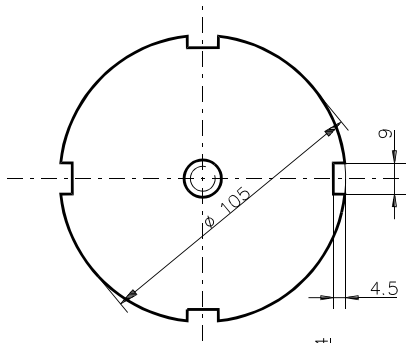
REFERENCIA RÉFÉRENCE REFERENCE ART. NR.	Fig	Dureza Dureté Hardness Härte Shöre	DIMENSIONES (mm) DIMENSIONS (mm) DIMENSIONS (mm) ABMESSUNGEN (mm)				COMPRESION COMPRESSION COMPRESSION DRUCKBELASTUNG		CHOQUE CHOC SHOCK STOSS	
TP			Ø A	B	D	C	Carga Charge Load Last (Kg)	Flecha Flèche Deflection Federweg (mm)	Carga Charge Load Last (Kg)	Flecha Flèche Deflection Federweg (mm)
TP 25	1	60	025	20	M-08	20	40	4,0±0,5	100	8,0±2,0
TP 30	1	60	030	30	M-06	15	50	6,0±1,0	140	12,0±2,0
TP 30 M08	1	60	030	30	M-08	20	50	6,0±1,0	140	12,0±2,0
TP 5050	2	60	050	50	M-08	20	90	10,0±1,5	335	20,0±3,0
TP 5050 M10	2	60	050	50	M-10	25	90	10,0±1,5	335	20,0±3,0
TP 5058	2	60	050	58	M-08	20	90	12,0±2,0	370	23,0±3,0
TP 5058 M10	2	60	050	58	M-10	25	90	12,0±2,0	370	23,0±3,0
TP 5065	2	60	050	65	M-08	20	90	13,0±2,0	370	26,0±4,0
TP 5065 M10	2	60	050	65	M-10	25	90	13,0±2,0	370	26,0±4,0
TP70	2	60	070	60	M-12	35	160	12,0±2,0	550	24,0±3,0
TP85	3	60	084	53	M-12	35	375	11,0±2,0	1.250	21,0±2,5
TP95	2	60	095	80	M-16	42	350	16,0±2,0	1.100	32,0±4,0
TP96	3	60	095	47	M-16	42	675	9,0±1,0	1.600	19,0±2,0
TP120	3	75	120	75	M-16	45	2.000	15,0±2,0	4.500	30,0±4,0
TP220	3	60	220	136	M-24	80	3.800	27,0±3,0	10.000	54,0±6,0

Autres dimensions ou filetages : nous consulter !

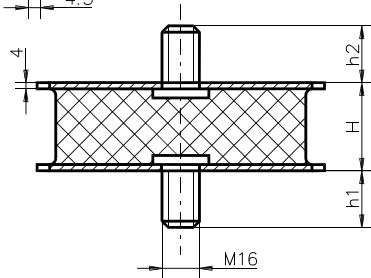
Matériaux standards : caoutchouc naturel NR / acier zingué ST37.

Sur demande : caoutchoucs SBR, NBR, EPDM ou CR (néoprène), aciers inox 304 ou 316, duretés de 20 à 90 Sh.

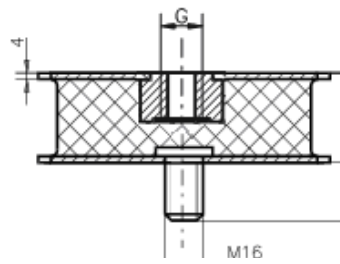
KR



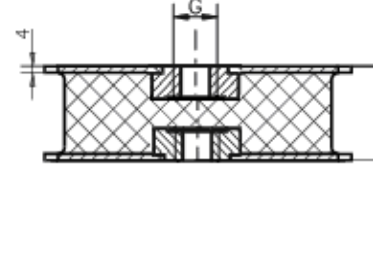
Type	D	H	h1	h2
KR-1	105	55	30	30
KR-2	105	40	30	25



KR-A

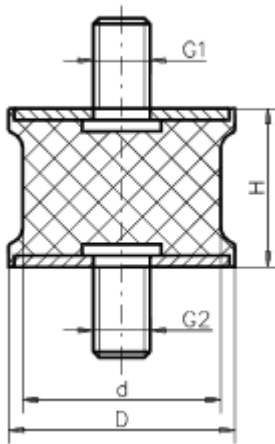


KR-B

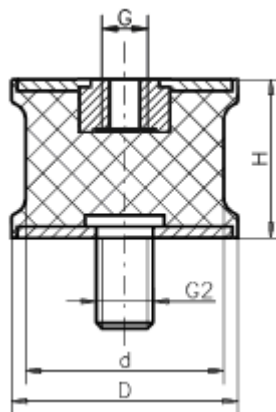


KR-C

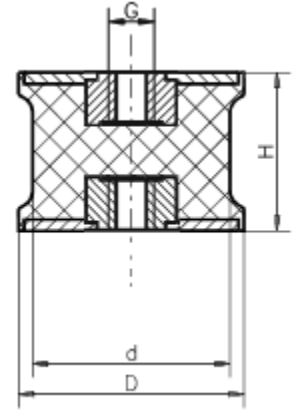
SP-1



SP-2

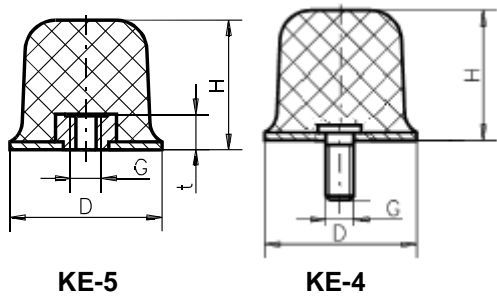


SP-3



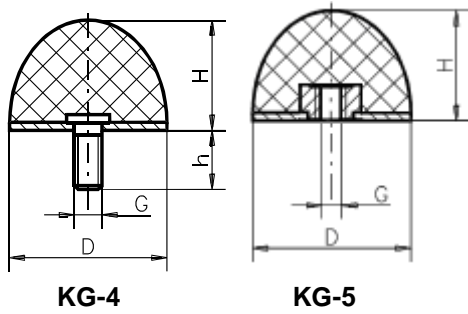
SP

D/d-H	D	d	H	G1	G2
25/22-22	26	22	22	M8x10	M8x18
40/35-28	40	35	28	M10x16	M10x20
46/40-25	46	40	25	M10x28	M10x28
75/70-40	75	70	40	M12x37	M12x37
100/95-55	100	95	55	M16x41	M16x41
100/95-75	100	95	75	M16x45	M16x45



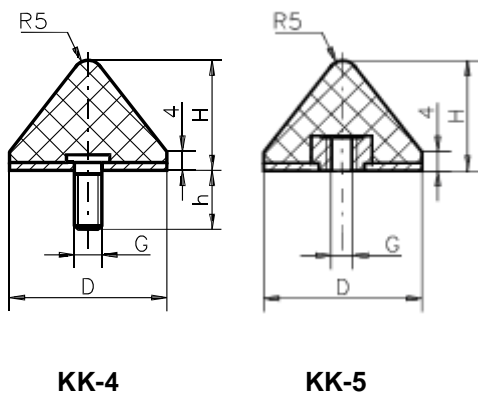
KE

Type	D	H	G	h
50/35	50	35	M10	10



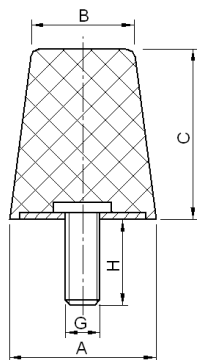
KG

D/H	D	H	G	h
25/13	25	13	M6	10
25/15	25	15	M6	18
30/26	30	26	M8	48



KK

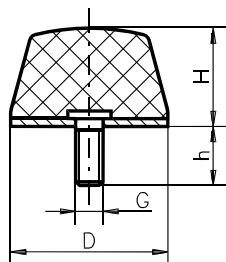
D/H	D	H	G	h
24/17	24	17	M8	20
25/16	25	16	M8	20
40/24	40	24	M8	28
50/28	50	28	M8	28
50/45	50	45	M10	35
60/45	60	45	M10	28
85/65	85	65	M12	37



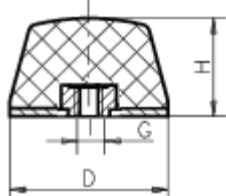
KH

Type	A	B	C	M Gxh
KH-1	43	30	50	M10x25
KH-2	43	30	35	M10x27
KH-3	38	30	35	M10x27
KH-4	63	57,5	50	M 10x31

KD

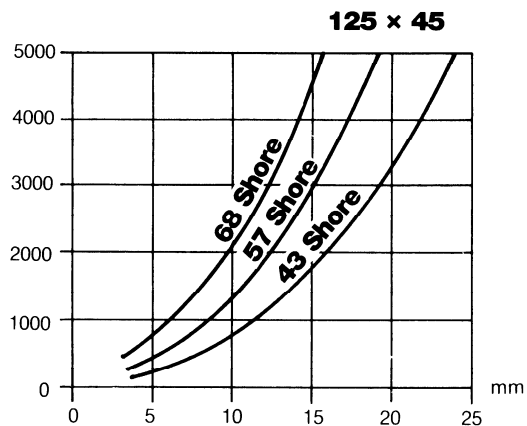
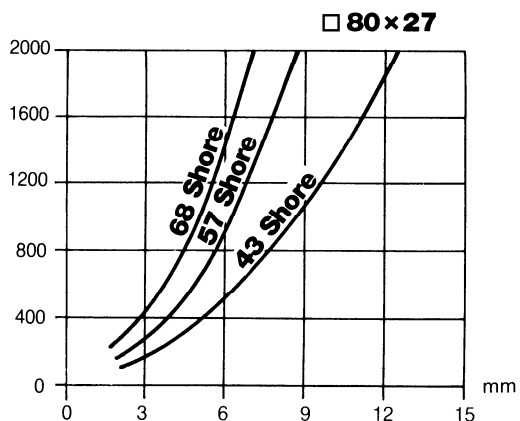
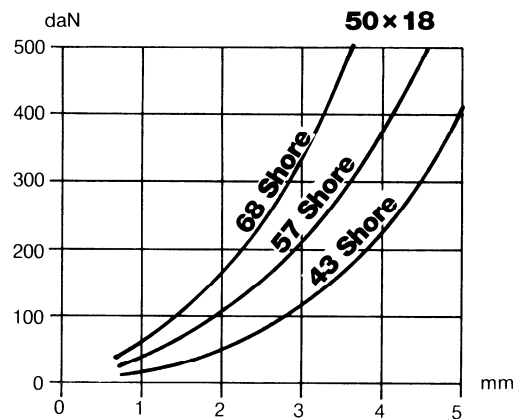
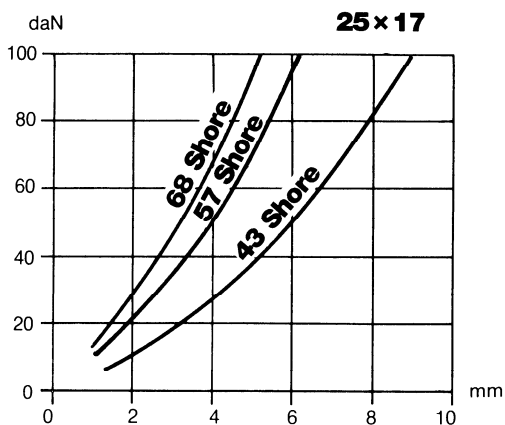


KD-4

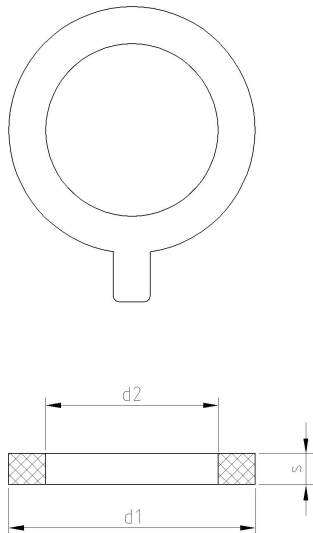


KD-5

D/H	D	H	G	H
12/12	12	12	M4	10
14/6,3	14	6,3	M4	4
25/12	25	12	M6	18
25/14	25	14	M4	10
25/17	25	17	M6	18
35/40 Sphère	35	40	M8	23
45/21	45	21	M8	46
50/18	50	18	M10	28
50/20 Carré	□50	20	M10	28
50/50	50	50	M10	28
80/27 Carré	□80	27	M12	37
125/45	125	45	M16	45

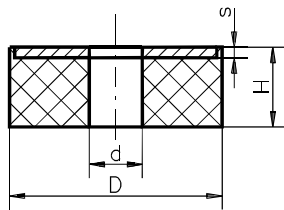


RONDELLES FREIN / BOLT-LOCK SEAL



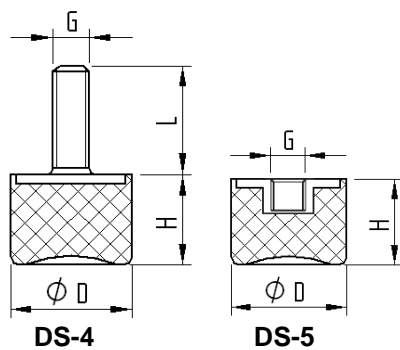
Type	d1	d2	S mm	DN(NA)
40/86	40	86	3	40
49/91,2	49	91,2	3	50
90/138	90	138	3	80
113/160	113	160	3	100
140/191	140	191	3	125
163/215	163	215	3	150
222/267	222	267	3	200
274/324	274	324	3	250
294/363	294	363	3	300
343/412	343	412	5,5	350
392/470	392	470	5,5	400
519/583	519	583	4	500
608/681	608	681	4,5	600

IS



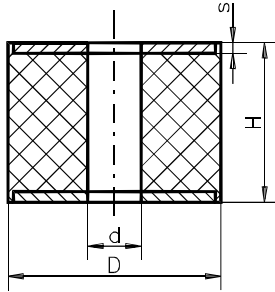
D/d-H	D	d	H	s
40/10-10	40	10	10	2
62/14-6	62	14	6	3
80/21-30	80	21	30	2
100/21-30	100	21	30	4
100/21-40	100	21	40	4
100/25-40	100	25	40	4
100/56-19	100	56	19	3
100/60-30	100	60	30	4
120/21-30	120	21	30	4
120/25-40	120	25	40	4
150/32-40	150	32	40	4

DS



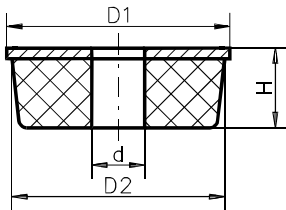
Type	D	H	G	h
15/14	15	14	M4	13
20/23,5	20	23,5	M6	18
25/18,5	25	18,5	M6	18
40/28	40	28	M8	10
50/28	50	28	M10	33
70/43	70	43	M10	28
75/37	75	37	M12	37

GH



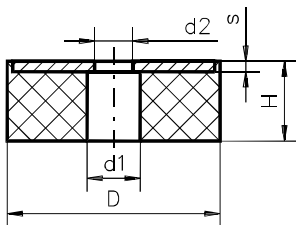
D/d-H	D	d	H	s
15/6-25	15	6	25	2
20/6-25	20	6	25	2
40/13-20	40	13	20	3
40/13-30	40	13	30	3
40/13-40	40	13	40	3
50/17-20	50	13	20	3
50/17-40	50	17	40	3
50/17-50	50	17	50	3
50/21-15	50	21	15	3
50/21-30	50	21	30	3
60/21-50	60	21	50	4
75/25-55	75	25	55	3
80/21-30	80	21	30	3
100/21-40	100	21	40	4
100/31-40	100	31	40	4
100/33-75	100	33	75	5
120/41-40	120	41	40	5
120/51-40	120	51	40	5
150/51-100	150	51	100	6
200/32-100	200	32	100	8
200/61-100	200	61	100	8

RB



Type	D1	D2	d	H
1	42	40	18	23
2	62	60	21	33
3	72	70	21	33
4	82	80	25	40
5	102	100	32	54
6	122	120	38	46

GK



D/H	D	H	d1	d2	s
30/16	30	16	16	9	3
40/16	40	16	16	9	3
40/20	40	20	17	9	3
50/16	50	16	20	11	3
50/20	50	20	22	11	3
60/18	60	18	25	25	3
60/20	60	20	25	11	4
75/25	75	25	30	13	6
80/20	80	20	32	13	4
100/25	100	25	40	13	6
100/30	100	30	60	33	6
125/25	125	25	50	17	6