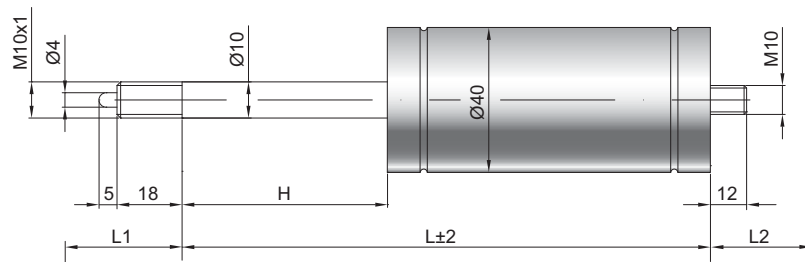


Ressort à gaz à blocage rigide S10-40

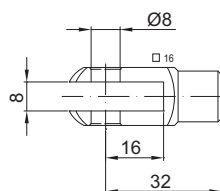
Force de poussée F1	250 - 1200 Newton
Progression	33 %
Tige	10 mm acier chromé
Corps	40 mm acier laqué noir
Embouts	Acier zingué

GZ 18



GZ 12

GX 32



Details

Courses H (mm)

10, 15, 20, 25, 30, 40, 50, 55, 60, 70, 80, 90, 100, 110, 120, 125, 130, 140, 150, 155, 170, 190, 200, 210, 220, 230, 290, 340, 390, 440, 490

Longueur standard GL

$L = 2,2 \times H + 100$
 $GL = L + L1 + L2$

Déclenchement

Longueur 5 mm
 Course 2 - 4 mm
 Blocage : poussée environ 12 x F1
 Traction maxi 3000 N



Voir nos systèmes de déblocage

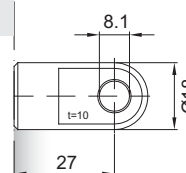
Equipement de série

Valve côté corps

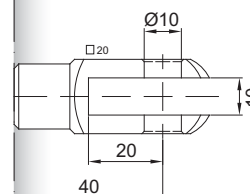
Options

- 3 - Etanchéité de la tige
- 4 - Chambre d'huile
- 6 - Tube de protection

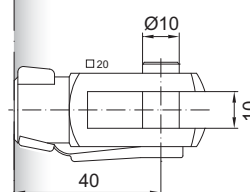
Existe en inox 303/304 et 316 (sur demande)



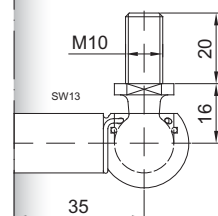
AU 27



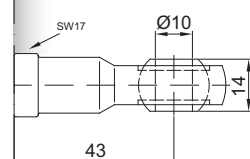
GA 40



GG 40



WG 35



AG 43