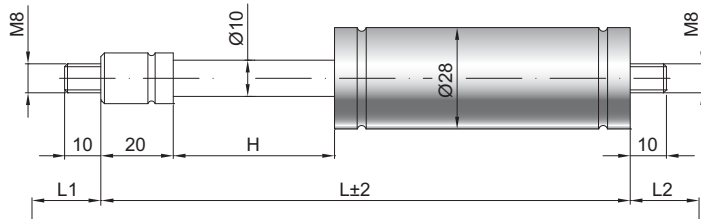


Ressort à gaz de traction Z10-28

Force de traction F1 150 - 1200 Newton
 Progression 20 %
 Tige 10 mm, acier chromé
 Corps 28 mm, acier laqué noir
 Embouts Acier zingué

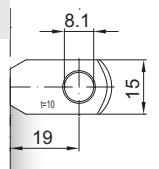
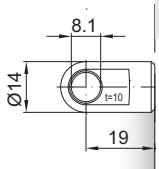
GZ 10

GZ 10



AU 19

AR 19



Details

Courses H (mm)
 20, 50, 60, 70, 80, 100, 110, 120, 130,
 150, 160, 180, 200, 210, 220, 250, 260, 300,
 350, 360, 400, 450, 500, 600

Longueur standard GL
 $L = 2 \times H + 100$
 $GL = L + L1 + L2$

Equipement de série
 Valve côté tige

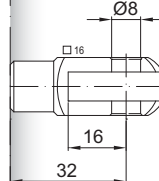
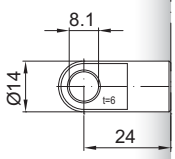
Options
 2 - Valve latérale QVGZ
 4 - Chambre d'huile
 6 - Tube de protection
 B3 - Système d'étanchéité
 NT - Basses températures
 HT - Hautes températures

Filetages également disponibles en M8

Existe en inox 303/304 et 316

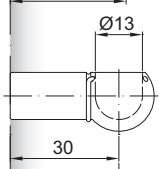
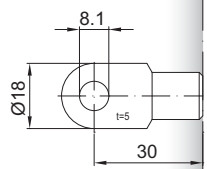
AS 24

GA 32



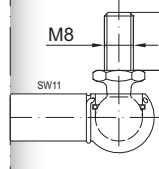
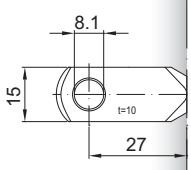
AS 30

PF 30



AR 27

WG 30



AG 36

WX 30

